



INNOVATIVE DESIGN • PARTNERS IN EFFICIENCY





# **GLADIATOR**

## LARGE GRIP TIRES

The Gladiator has large grip tires to hold the blade from skidding sideways when digging ditches with one corner of the blade.



Shown with optional  
**MOLDBOARD EXTENSION KIT**

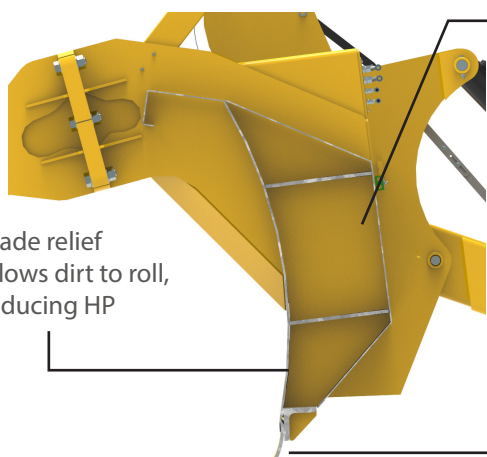
## TILT

The Gladiator can be tilted to dig 24" with one corner allowing for great contours.



## DESIGN

The unique blade design creates added strength and longevity. The Gladiator boasts the deepest box section in the industry protecting your investment.



Robust frame design, up to 75% stronger than competitive units

Blade relief allows dirt to roll, reducing HP

Unique angle of cutting edge reduces power hop

#### DEPTH INDICATOR

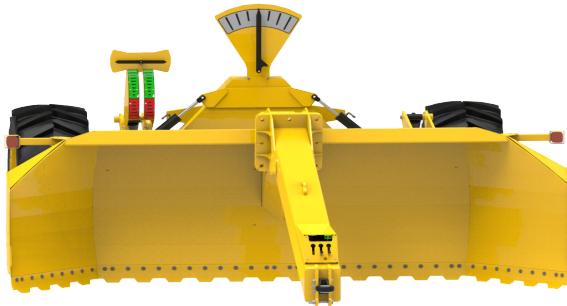
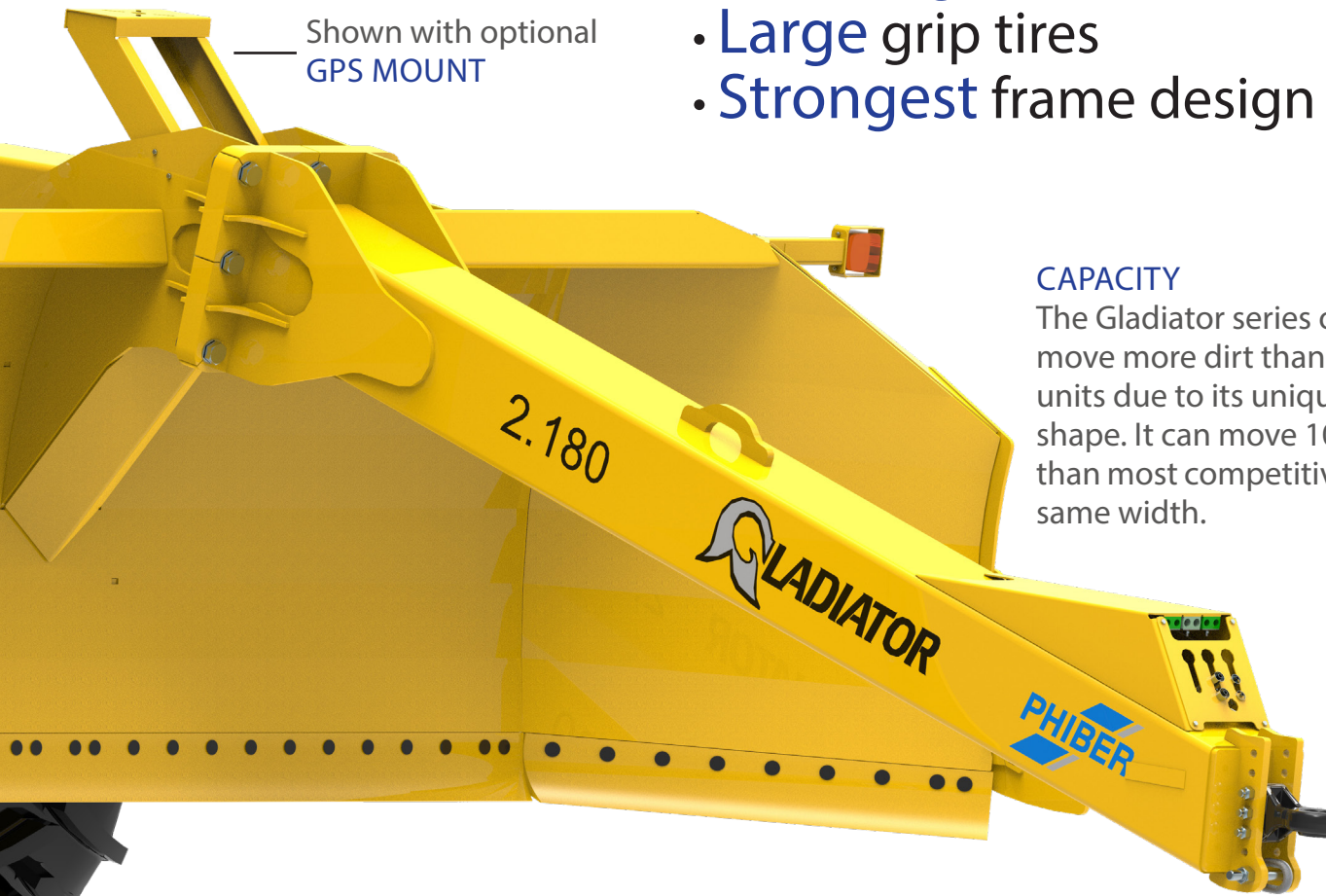
Know your cutting or filling depth.

Shown with optional  
GPS MOUNT

- **Heaviest** in class
- **Extra High** volume dirt capacity
- **Large** grip tires
- **Strongest** frame design

#### CAPACITY

The Gladiator series of blades can move more dirt than competitive units due to its unique blade shape. It can move 10% more dirt than most competitive blades the same width.



#### SERRATED CUTTING EDGE:

Option available for cutting into clay like conditions.

#### LARGE INDICATORS

Each machine comes with easy to see tilt, horizon and depth indicators.

#### HEAVY WEIGHT

The Gladiator is one of the heaviest lbs/ft in the industry. This ensures cutting in hard soils when others skid over the top.

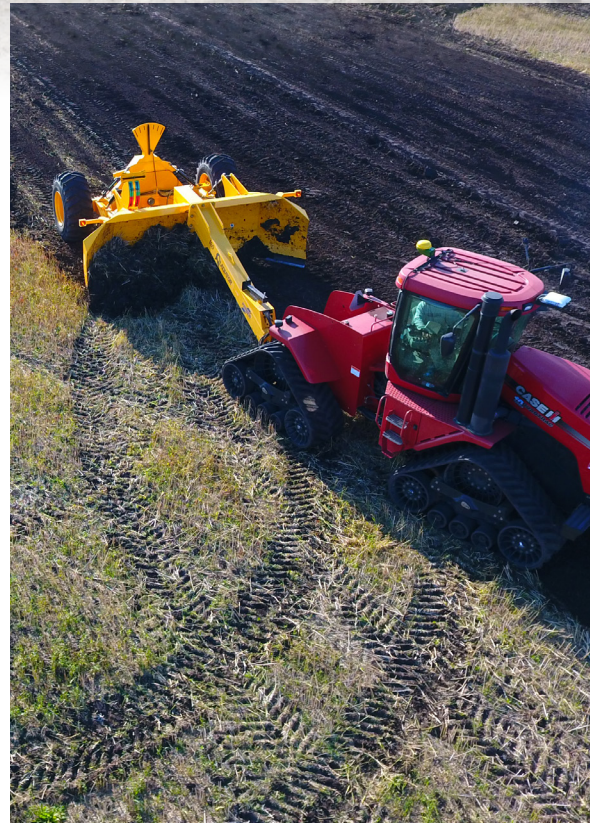




# Specifications



Models		Gladiator 2.18	Gladiator 2.22
Size			
Width	ft (cm)	18 (549)	22 (671)
Length	ft (cm)	28.75 (876)	28.75 (876)
Height	ft (cm)	10 (305)	10 (305)
Weight	lb (kg)	21,000 (9,525)	23,000 (10,433)
Specifications			
Hydraulic Remotes		2	2
Roll Depth on End of Blade	in (cm)	24 (61)	24 (61)
Rear Tail Lights & Flashers		●	●
Moldboard Ext. Kit		○	○
GPS Mount		○	○
Serrated Cutting Edge		○	not available
Volume of Dirt	cu/yds	16-20	21-26
Tire Size		R1 Lug 30.5L - 32/16 ply	
		● Standard	○ Optional
Requirements			
Horsepower Requirements		250-700 hp	350-700 hp
Tractor Hydraulics		2,900 psi	2,900 psi



## Canada:

108 New Hope Dr., Box 58  
Crystal City, MB R0K 0N0

## USA:

68 Main Street, Box 54  
Sarles, ND 58372

Toll Free: 866.264.8030 |  
International: 204.873.2448  
[www.phiber.ca](http://www.phiber.ca)



This literature has been compiled for worldwide circulation. PhiBer reserves the right to change specifications, design and price of products described in this literature without notice. Please inquire to our sales network for any further information. Printed in Canada. Issued 6/2018



INNOVATIVE DESIGN • PARTNERS IN EFFICIENCY