

EARTH MOVING



GLADIATOR

Design

The Gladiator's design creates added strength and durability. The Gladiator boasts the deepest box section in the industry, protecting your investment.

Capacity

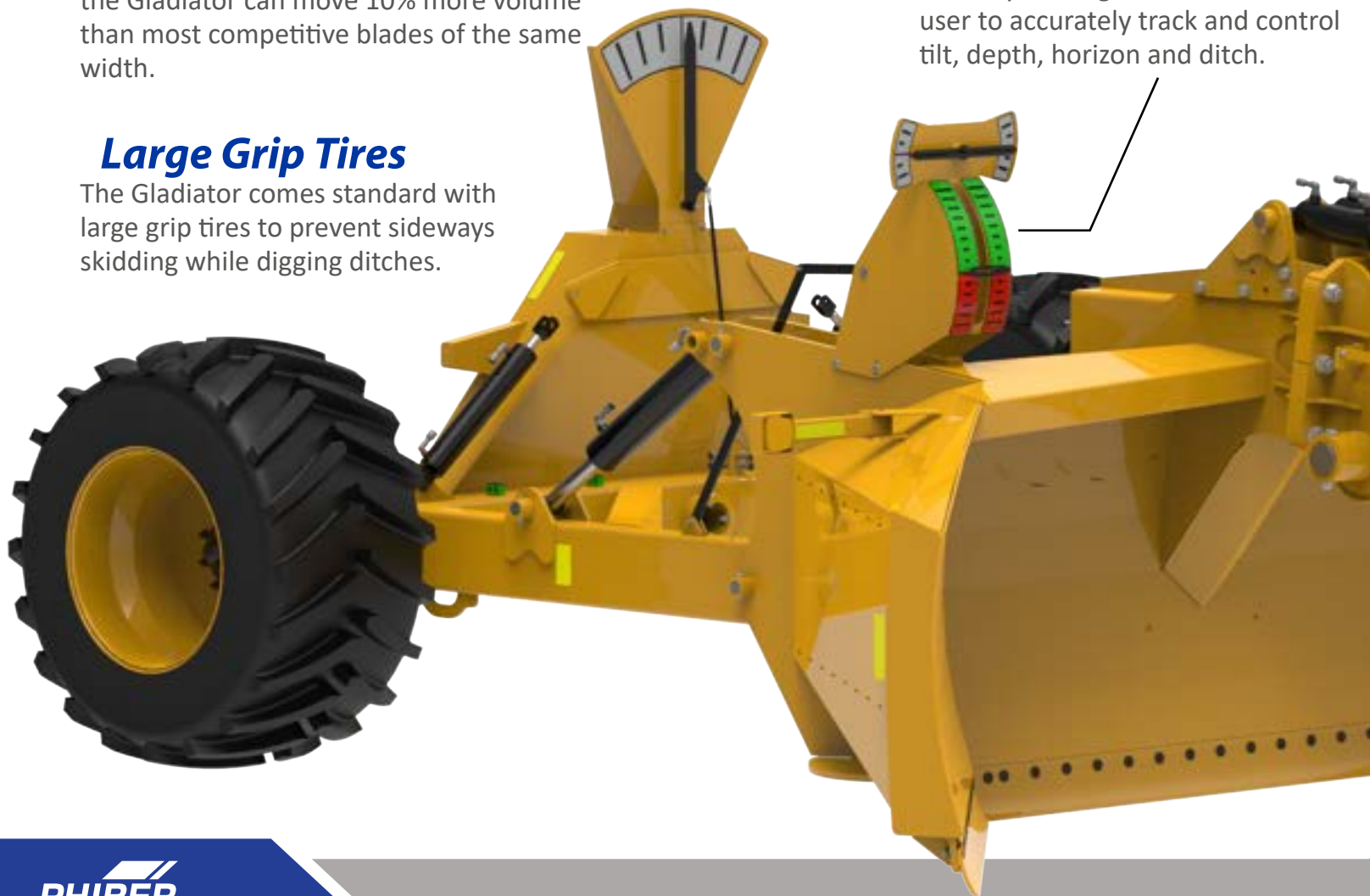
The Gladiator can move more dirt than competitive units. Thanks to its unique shape the Gladiator can move 10% more volume than most competitive blades of the same width.

Large Grip Tires

The Gladiator comes standard with large grip tires to prevent sideways skidding while digging ditches.

Large Indicators

Industry leading Indicators allows the user to accurately track and control tilt, depth, horizon and ditch.



Heaviest in its class

Strongest frame design

Large grip tires

Extra-high volume dirt capacity



The Gladiator's robust frame design is up to 75% stronger than competitive units.

Blade relief allows dirt to roll, reducing HP requirements.

A uniquely angled cutting edge reduces power hop.

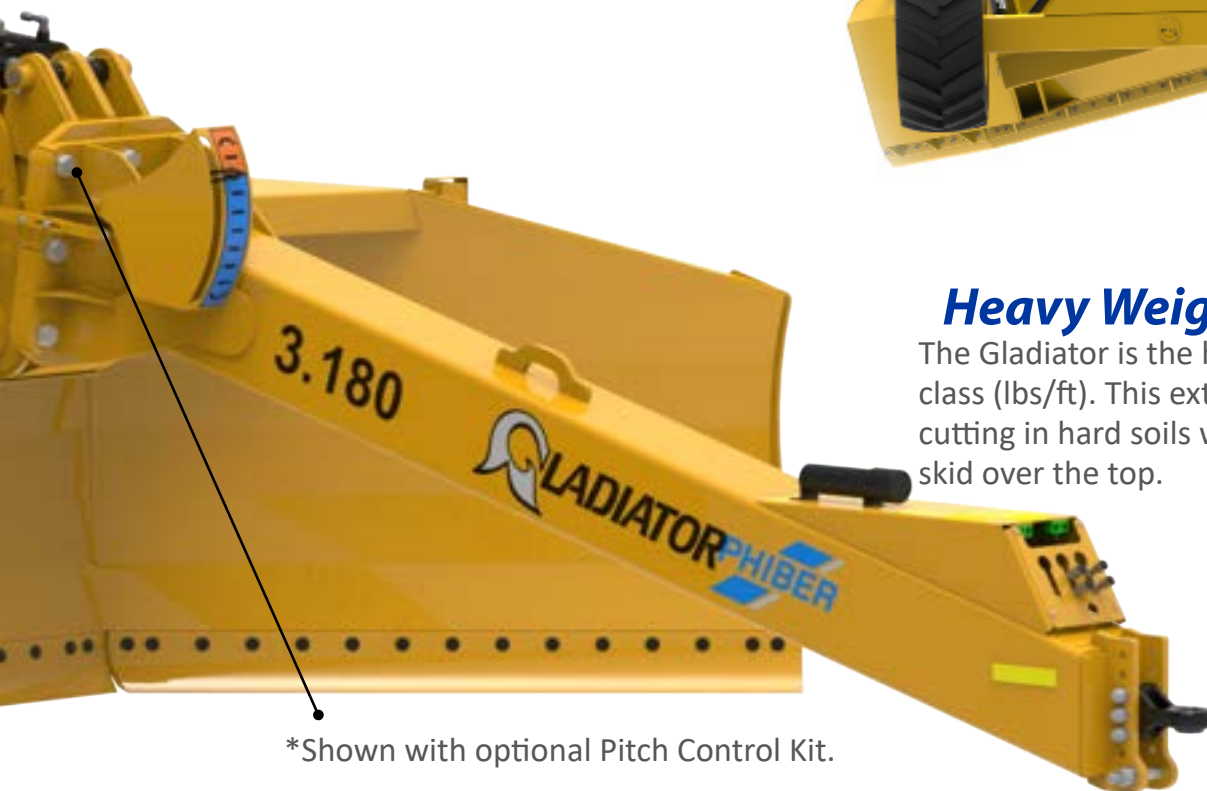
Tilt

The Gladiator can tilt one corner down 24" to allow for contouring and digging ditches.



Heavy Weight

The Gladiator is the heaviest blade in its class (lbs/ft). This extra weight ensures cutting in hard soils where competitors skid over the top.

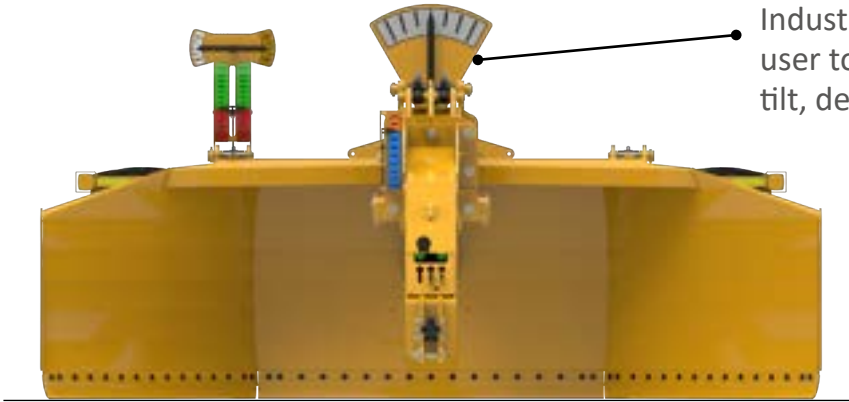


*Shown with optional Pitch Control Kit.

Take authority over land loss by commanding more control during reclamation.

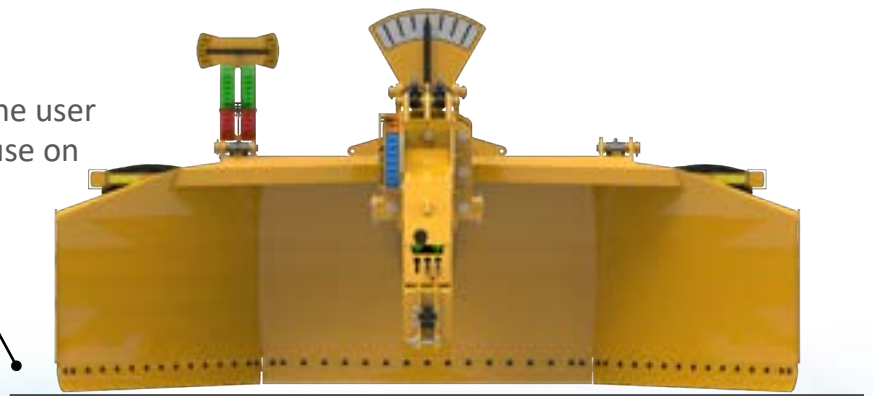
Large Indicators

Industry leading Indicators allows the user to accurately track and control tilt, depth, horizon and ditch.



Crown Height

The Pitch Control Kit lends the user provision to crown 2.5" for use on roads or drives.



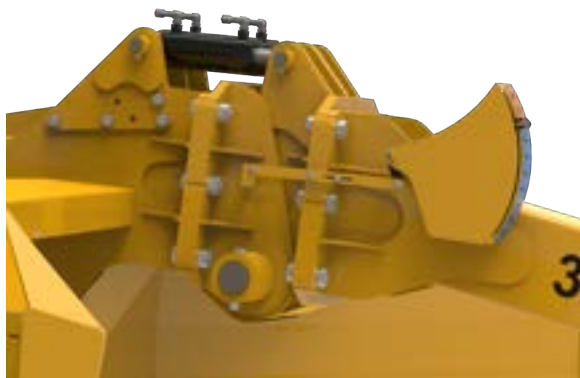
Ditch Depth

In addition to the crowning allowance, the Pitch Control Kit allows a 10.25" ditch depth for drainage in designated areas.



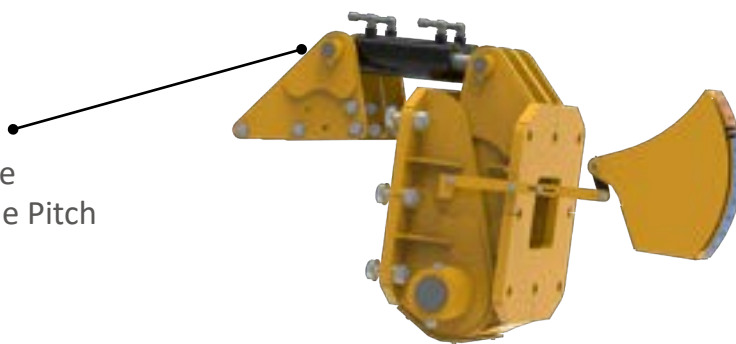
Optional Pitch

The optional pitch-control assembly can be added to any series-3 Gladiator.



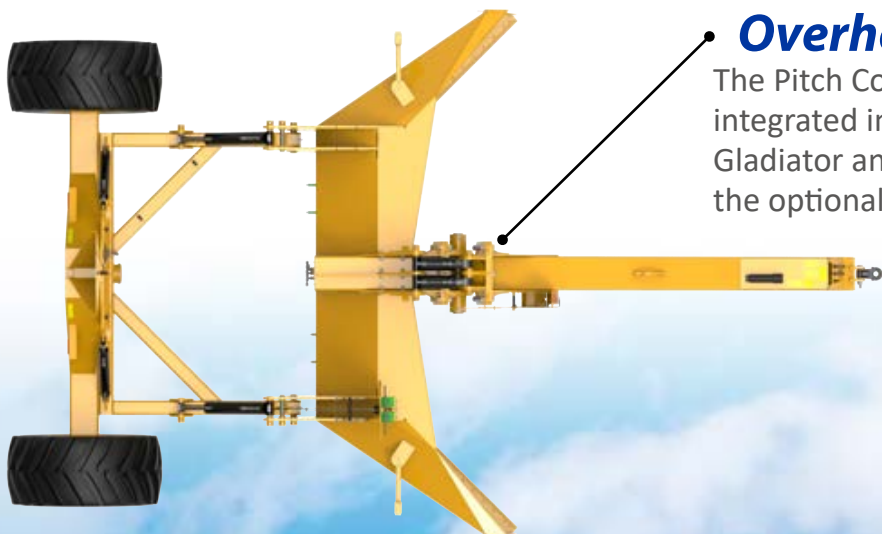
Dual Cylinders

Dual cylinders are the heart of the crown and ditch capabilities of the Pitch Control Kit.



Overhead

The Pitch Control Kit is seamlessly integrated into the neck of the Gladiator and is fully compatible with the optional GPS mount.



Options

Available in 18 ft or 22 ft models, the Gladiator is sure to maximize profitability throughout every acre!

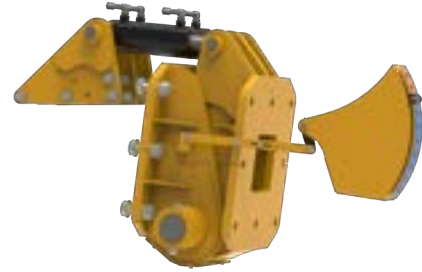
Category-4 or 5 Hitch

Each blade comes standard with a 2" category-4 hitch. A 2 $\frac{3}{16}$ " category-5 hitch is available as an



Pitch Control

Increase the Gladiators versatility with the optional Pitch Control Kit.



GPS Mount

Attach a GPS receiver for precise tracking of blade location.



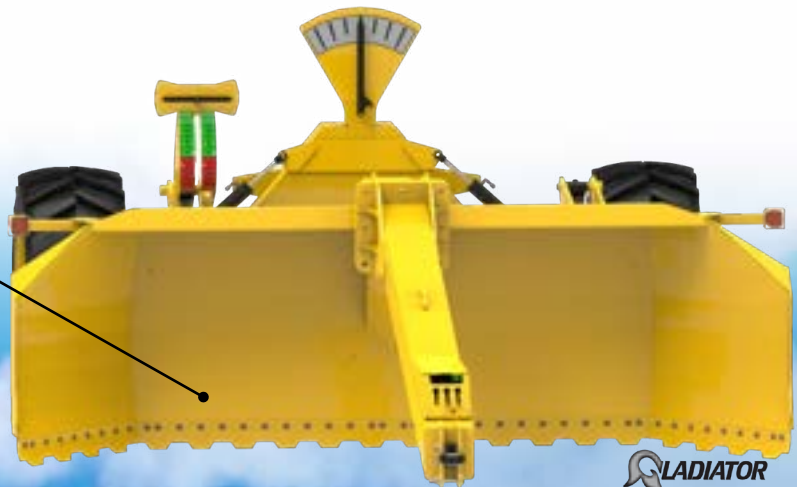
Laser Poles

Increase the Centurion's precision with the optional Laser Poles.



Serrated Cutting Edge

An optional serrated cutting edge can be added for use in heavy clay or hard soil conditions.



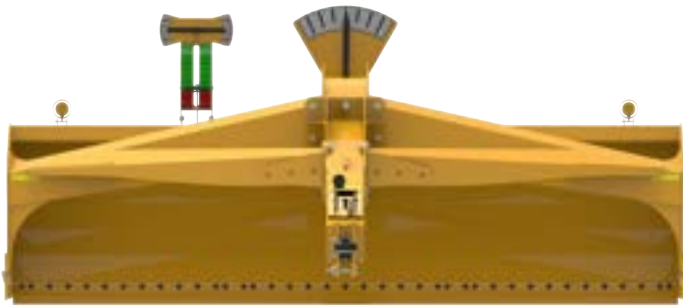


GLADIATOR

CENTURION

Design

The Centurion has been designed execute land leveling projects with industry leading precision.



Box Depth

The Centurion's deep box design increases carrying capacity.

Laser Poles

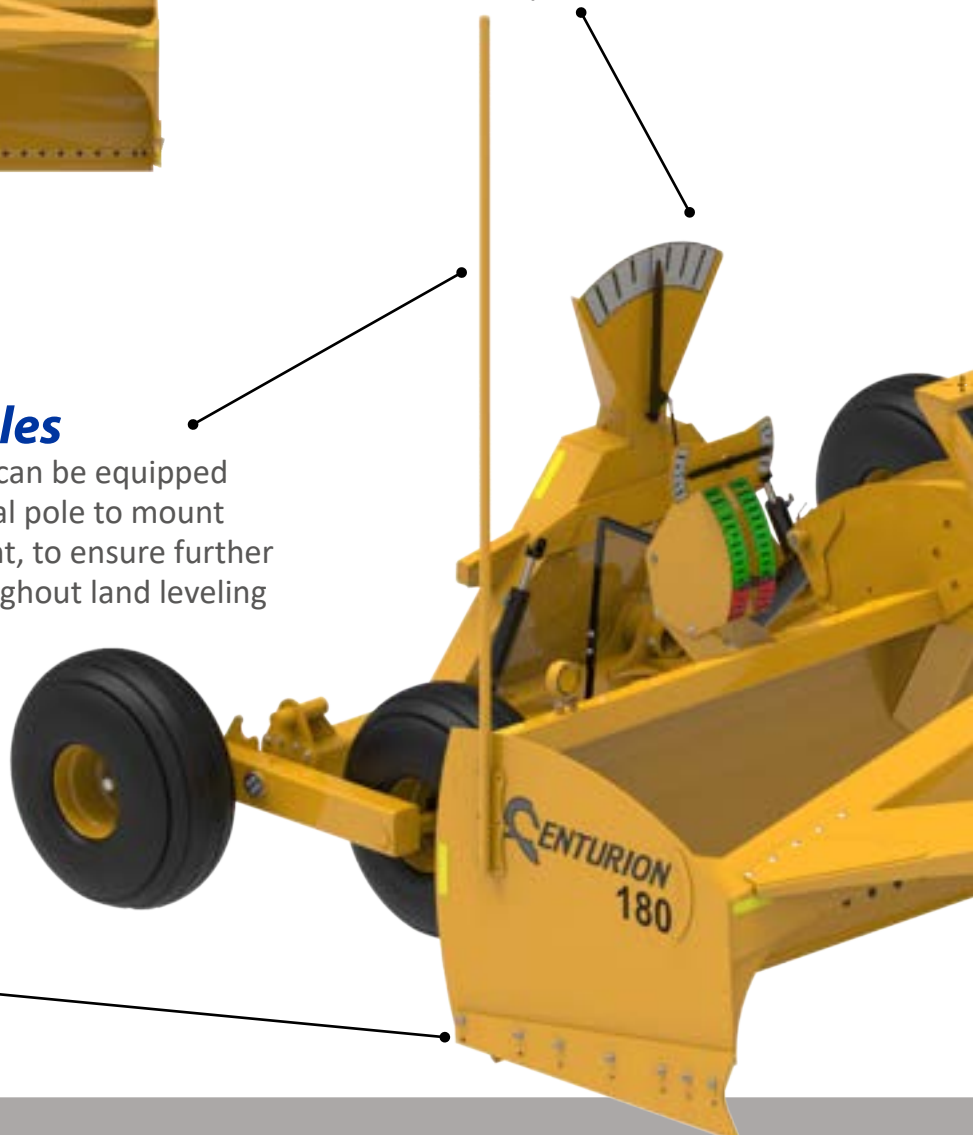
The Centurion can be equipped with an optional pole to mount laser equipment, to ensure further precision throughout land leveling projects.

Containment Guide

High-wear, reversible and replaceable containment guide, ensures longevity and durability of the Centurion.

Large Indicators

Industry leading Indicators allows the user to accurately track and control tilt, depth and horizon.



Precision for Generations to come... PhiBer's Earth Moving Implements are designed with the future in mind.

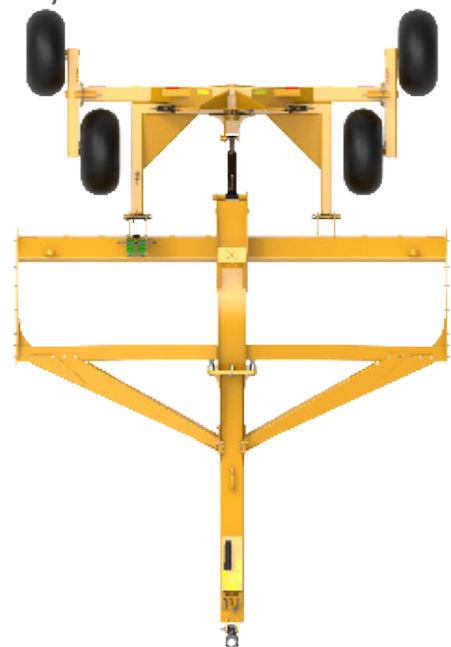
Tilt

The Centurion lends the user 8.7 degree tilt in both directions.



Walking Axles

The Centurion boasts walking axles as well as a simplistic single lift cylinder to aid in precision throughout many different landscapes.



*Shown with optional Laser Poles.

CENTURION



INNOVATIVE DESIGN • PARTNERS IN EFFICIENCY

GLADIATOR



Specifications



Measurement	Model:	Gladiator 3.18	Gladiator 3.22	Centurion 180
Width	ft(cm)	18 (548.64)	22 (670.6)	18 (548.64)
Length	ft(cm)	28.75 (876.3)	28.75 (876.3)	27 (824.9)
Height	ft(cm)	10 (304.8)	10 (304.8)	8.1 (247.4)
Weight	lb(kg)	21000 (9525.4)	23000 (10432.6)	12200 (5545)
Specifications				
Roll Depth	in(cm)	24 (60.98)	24 (60.98)	16.5 (42)
Dirt Volume	(cu/yds)	16-20	21-26	14.7
Hydraulic Remotes *		2 (3*)	2 (3*)	2
Rear Tail Lights and Flashers		Standard	Standard	Standard
GPS Mount		Optional	Optional	Optional
Cutting Edge		Standard	Standard	Standard
Serrated Edge		Optional	Optional	N/A
Pitch Control *	HYD remote	Optional	Optional	N/A
Walking Axels		N/A	N/A	Standard
Requirements				
Horsepower		350 +	450 +	250 +
Tractor Hydraulics		2900 psi	2900 psi	2900 psi



Canada:

108 New Hope Dr., Box 58
Crystal City, MB R0K 0N0

USA:

68 Main Street, Box 54
Sarles, ND 58372

Toll Free: 866.264.8030 **International:** 204.873.2448 www.PhiBer.ca

This literature has been compiled for worldwide circulation. PhiBer reserves the right to change specifications, design and price of products described in this literature without notice. Please inquire to our sales network for any further information. Printed in Canada. Issued 07/2024



INNOVATIVE DESIGN • PARTNERS IN EFFICIENCY