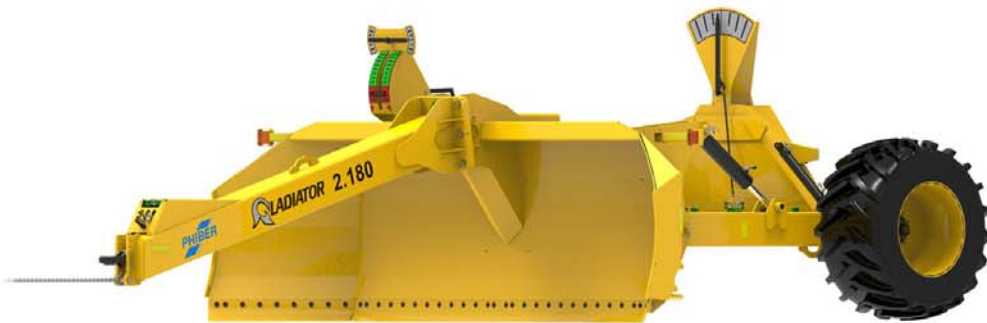


PhiBer Gladiator Scraper Blade



Model: 2.180, 2.220



INNOVATIONS FOR PROGRESSIVE PEOPLE

PARTS MANUAL

www.phiber.ca

This page is intentionally left blank

2.180 GLADIATOR	1
2.180 AXLE.....	2
2.180 BLADE.....	3
2.180 HITCH.....	4
2.180 YOKE.....	5-7
2.220 GLADIATOR	8
2.220 AXLE.....	9
2.220 BLADE.....	10
2.220 HITCH.....	11
2.220 YOKE.....	12-14
GLADIATOR LIGHT HARNESS.....	15
GLADIATOR BLADE EXTENSION KIT	16
GLADIATOR GPS MOUNT KIT.....	17
GLADIATOR HYDRAULIC SCHEMATIC.....	18

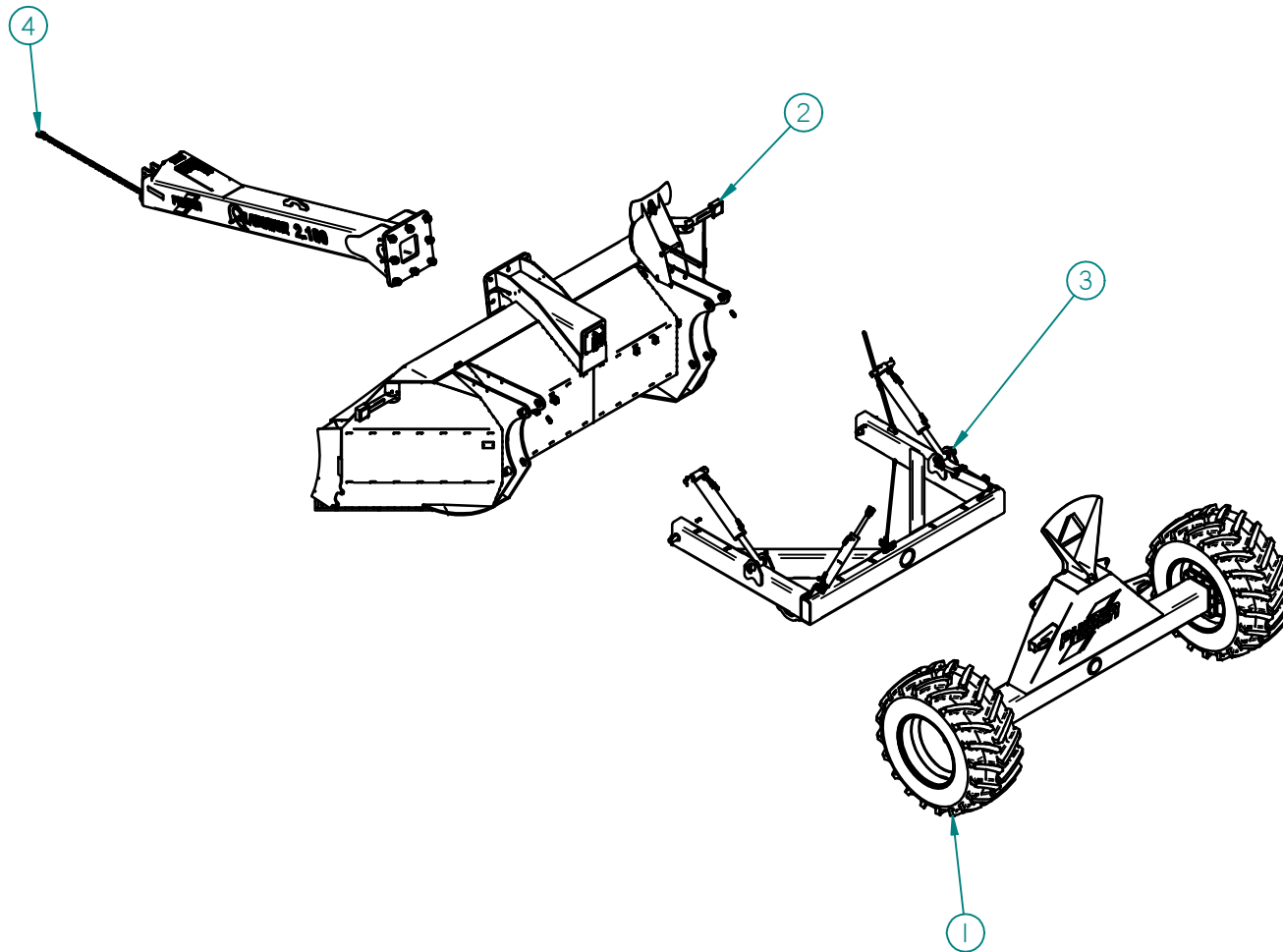
This page is intentionally left blank

2.180

GLADIATOR 2.180 MODEL (18')

WHG500002

ITEM	PART NO.	DESCRIPTION	QTY
1	ASM500002	AXLE ASSY	1
2	ASM500003	BLADE ASSY	1
3	ASM500004	YOKE MOUNT ASSY	1
4	ASM500005	HITCH ASSY	1

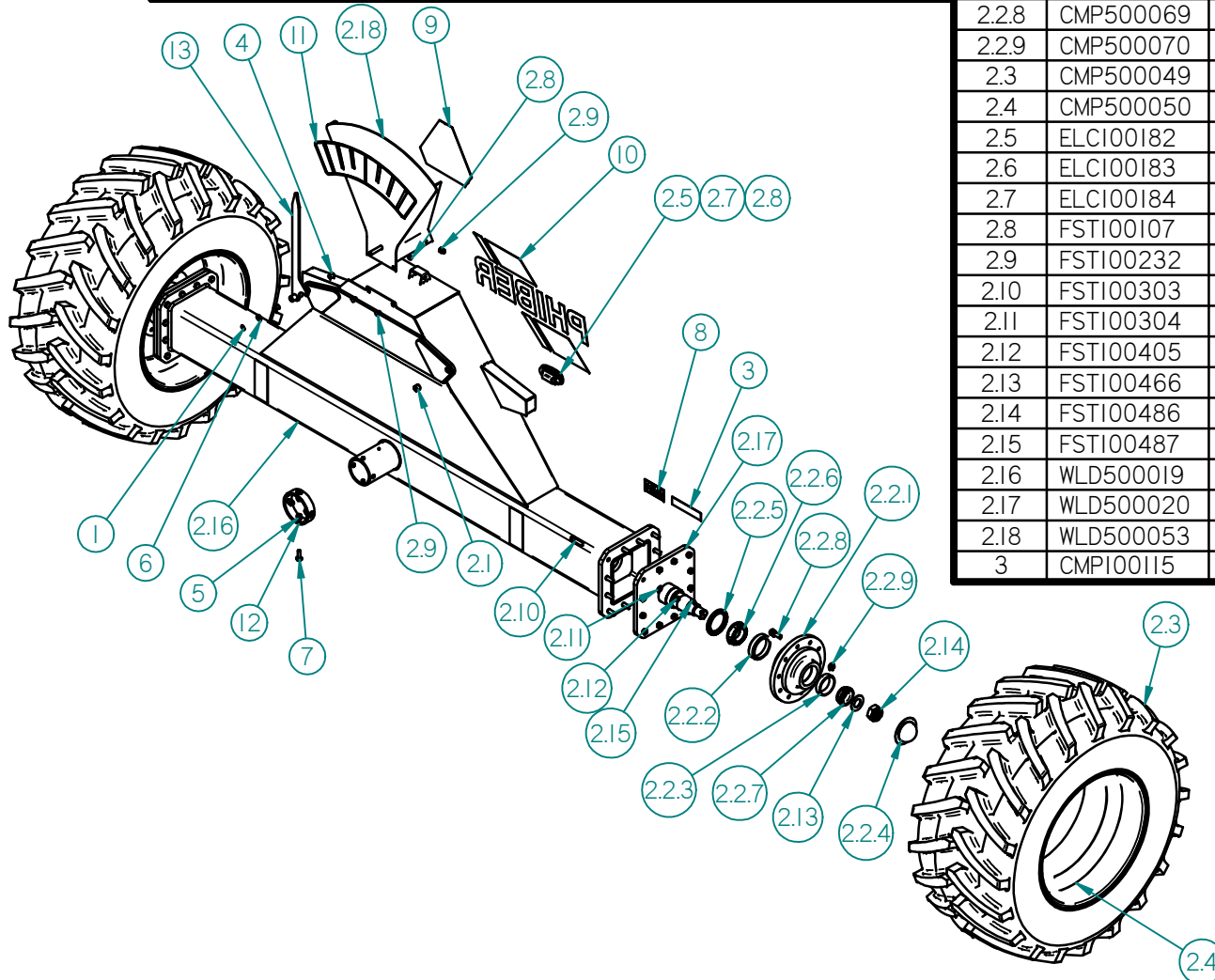


2.180

AXLE ASSY

ASM500002

ITEM	PART NO.	DESCRIPTION	QTY	ITEM	PART NO.	DESCRIPTION	QTY
4	CMP400172	FLANGE BUSHING .750" X .875" X 1.000"	2	1	300338	SNAP RING EXTERNAL 0.75	1
5	FST100278	5/8" CRIMP NUT	4	2.1	CMP100273	16 DU 16 PTFE BRONZE/STEEL	2
6	FST100404	3/4" WASHER HARDENED	1	2.2	CMP500029	HUB, 10 BOLT, 13.188" BC, 11.040" PILOT	2
7	FST100442	5/8" X 2" FLANGE BOLT GR8	4	2.2.1	CMP500022	10 BOLT HOUSING, HD1021	1
8	SAF200103	PINCH POINT HAZARD UNDER LIFT IN	2	2.2.2	CMP500027	RACE, HDA1021 HUB, INNER HM218210	1
9	SAF200107	SLOW MOVING VEHICLE SIGN	1	2.2.3	CMP500028	RACE, HDA1021 HUB, OUTER HM 212010	1
10	SAF500008	PHIBER LOGO 20.00" X 36.23"	1	2.2.4	CMP500030	DUST CAP	1
11	SAF500013	LEVEL IND DECAL	1	2.2.5	CMP500031	CR43771 SEAL	1
12	SAW500033	ROTATION LOCK TUBE	1	2.2.6	CMP500067	BEARING, HDA1021 HUB, INNER HM218248	1
13	WLD500033	LEVEL IND WELDT	1	2.2.7	CMP500068	BEARING, HDA1021 HUB, OUTER HM 212049	1
				2.2.8	CMP500069	WHEEL STUD, WB51	10
				2.2.9	CMP500070	WHEEL NUT, WB52	10
				2.3	CMP500049	30.5-32 TIRE 16 PLY	2
				2.4	CMP500050	27X32 10 HOLE RIM	2
				2.5	ELC100182	LIGHT, OVAL RED GRO 52892	2
				2.6	ELC100183	LIGHT, OVAL GROMMET 92420	2
				2.7	ELC100184	LIGHT, OVAL 3 PIN PIGTAIL 67000	2
				2.8	FST100107	1/2" NUT	4
				2.9	FST100232	1/2" X 1" CARRIAGE BOLT	4
				2.10	FST100303	3/4" X 3" CAP SCREW	24
				2.11	FST100304	3/4" FLAT WASHER	22
				2.12	FST100405	3/4" CRIMP NUT	24
				2.13	FST100466	2" SAE FLAT WASHER	2
				2.14	FST100486	2-12 UN SLOTTED NUT	2
				2.15	FST100487	3/8" X 3" ROLL PIN	2
				2.16	WLD500019	AXLE WELDT	1
				2.17	WLD500020	SPINDLE WELDT	2
				2.18	WLD500053	AXLE IND WELDT	1
				3	CMP100115	CONSPICUITY TAPE RED 2" X 9"	2



WHEEL BOLT TORQUE: 462 FTLB

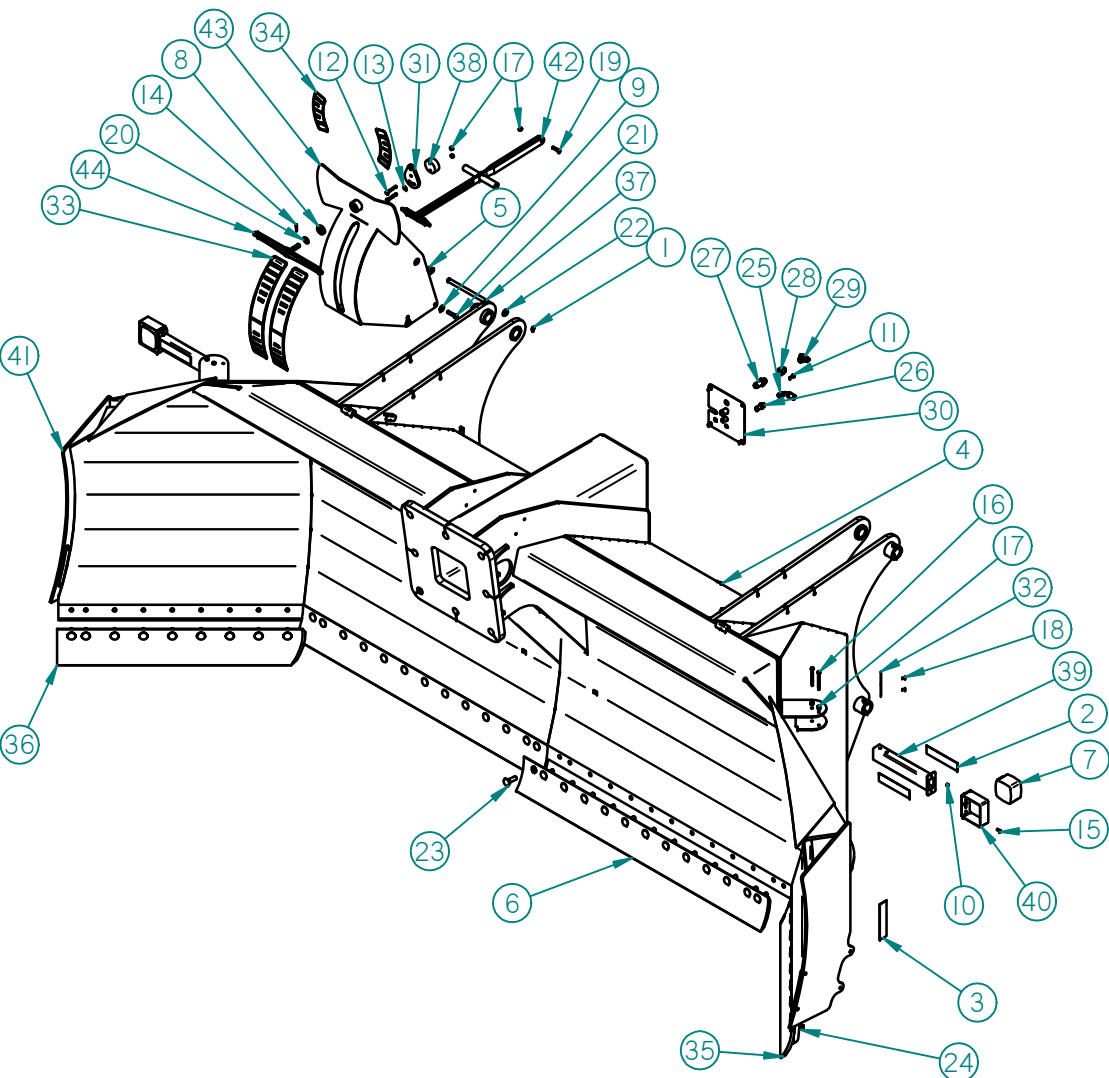
2.180

BLADE ASSY

ASM500003

ITEM	PART NO.	DESCRIPTION	QTY
37	SAW500064	HEIGHT LINKAGE PIVOT SHAFT	1
38	SAW500067	WEIGHT SHAFT	1
39	WLD500022	LIGHT POST WELDT	2
40	WLD500032	LIGHT COVER WELDT	2
41	WLD500051	18' BLADE WELDMENT	1
42	WLD500056	HEIGHT IND WELDT	1
43	WLD500057	HORIZON IND WELDT	1
44	WLD500060	HORIZON IND WELDT	1

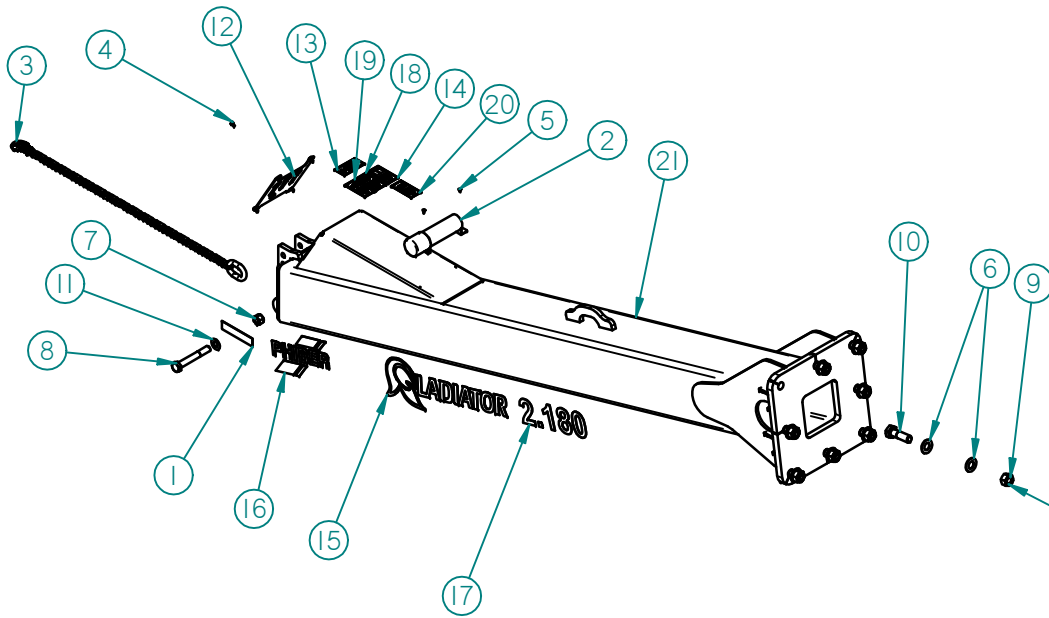
ITEM	PART NO.	DESCRIPTION	QTY
1	300338	SNAP RING EXTERNAL 0.75	2
2	CMP100115	CONSPICUITY TAPE RED 2" X 9"	4
3	CMP100128	CONSPICUITY TAPE AMBER 2" X 9"	6
4	CMP100319	3/8" P-CLIP	6
5	CMP400172	FLANGE BUSHING .750" X .875" X	4
6	CMP500023	5/8" X 8" GRADER BLADE	2
7	CMP500047	CLEARANCE MARKER AMBER/AMBER	2
8	CMP500065	0.688" HEX BORE BALL BEARING	2
9	FST100106	1/2" FLAT WASHER	8
10	FST100135	1/4" LOCK NUT	4
11	FST100141	3/8" X 1" CAP SCREW	4
12	FST100144	3/8" X 2 1/2" CAP SCREW	2
13	FST100150	3/8" FLAT WASHER	1
14	FST100155	1/4" X 1 1/2" ROLL PIN	2
15	FST100169	1/4" X 3/4" CAP SCREW	4
16	FST100200	3/8" X 4" CAP SCREW	4
17	FST100206	3/8" LOCKNUT	12
18	FST100228	POP RIVET STEEL 3/16 X 1/2 X 5/8	4
19	FST100281	3/8" X 1 3/4" BOLT	1
20	FST100304	3/4" FLAT WASHER	2
21	FST100317	1/2" X 2 1/4" BOLT	4
22	FST100404	3/4" WASHER HARDENED	3
23	FST100483	3/4 X 2 3/4 PLOW BOLT GR8	44
24	FST100488	3/4" NUT GR8	44
25	HYDI00309	JIC HOSE END 8G 8F JX90M	2
26	HYDI00392	BULKHEAD 08 MJIC X 08 MJIC	4
27	HYDI00393	BULKHEAD 12 MJIC X 12 MJIC	2
28	HYDI00550	2406-12-08 JIC REDUCER	2
29	HYDI00683	6600-08-08 TEE, MJIC, MJIC, FJIC	4
30	PCT500048	TUBE CLOSING PLATE	1
31	PCT500280	WEIGHT PLATE	1
32	SAFI00100	SERIAL NUMBER PLATE	1
33	SAF500012	HEIGHT IND DECAL	2
34	SAF500014	HORIZON IND DECAL	2
35	SAW500042	LH WING BLADE	1
36	SAW500061	RH WING BLADE	1



2.180

HITCH ASSY

ASM500005



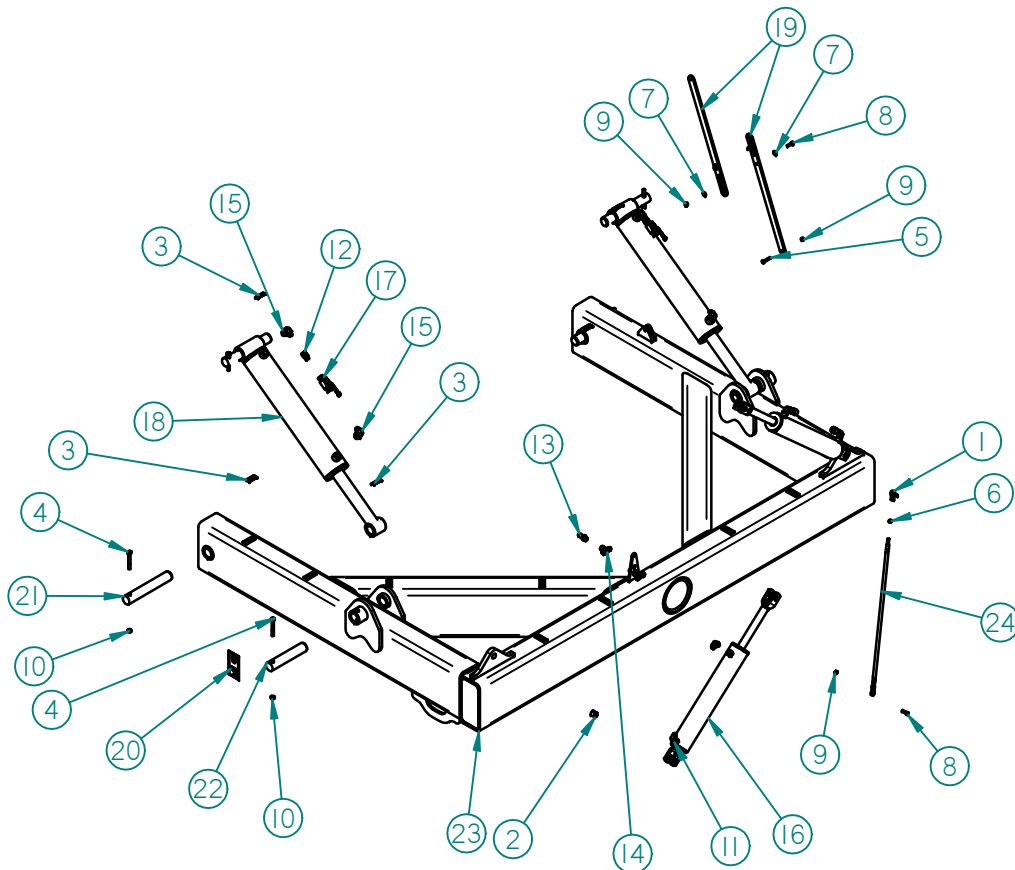
ITEM	PART NO.	DESCRIPTION	QTY
1	CMPI00128	CONSPICUITY TAPE AMBER 2" X 9"	2
2	CMPI00313	MANUAL CANISTER	1
3	CMP500073	SAFETY CHAIN, 1/2"x 5' LG.	1
4	FST100140	3/8" X 3/4" CAP SCREW	4
5	FST100228	POP RIVET STEEL 3/16 X 1/2 X 5/8	2
6	FST100313	1 1/2" HARDENED WASHER	16
7	FST100321	1 1/4" LOCK NUT	1
8	FST100351	1 1/4" X 9" GR 8 BOLT	1
9	FST100478	1 1/2-12 NF LOCK NUT	8
10	FST100479	1 1/2" X 5" NF CAP SCREW GR8	8
11	FST100726	1 1/4" HARDENED WASHER F436	1
12	PCT500046	HYD STORAGE PLATE	1
13	SAF200103	PINCH POINT HAZARD UNDER LIFT IN	1
14	SAF200104	READ SAFETY MANUAL	1
15	SAF500002	GLADIATOR DECAL	2
16	SAF500007	PHIBER LOGO 10.00" X 17.88"	1
17	SAF500011	18' GLADIATOR MODEL DECAL	2
18	SAF500015	SPEED LIMIT DECAL	1
19	SAF500016	HYDRAULIC SAFETY DECAL	1
20	SAF500017	DIG SAFETY DECAL	1
21	WLD500052	SCRAPER HITCH WELDT	1

2.180

YOKE ASSY

ASM500004

SERIAL # GB218020104178 AND OVER



ITEM	PART NO.	DESCRIPTION	QTY
1	CMPI00253	3/8 SEALMASTER ROD END TF-6	2
2	CMPI00273	16 DU 16 PTFE BRONZE/STEEL	2
3	CMP500066	DECAL GREASE	5
4	FSTI00103	1/2" x 4" CAP SCREW	6
5	FSTI00143	3/8" X 2" CAP SCREW	1
6	FSTI00148	3/8" NUT	2
7	FSTI00150	3/8" FLAT WASHER	4
8	FSTI00201	3/8" X 1 1/2" CAP SCREW	4
9	FSTI00206	3/8" LOCKNUT	4
10	FSTI00356	1/2" CRIMP NUT	6
11	HYDI00337	6801-08-08 ELBOW 90°, MALE ORB	4
12	HYDI00365	6402-08-08 SWIVEL ADAPTER, MALE	2
13	HYDI00392	BULKHEAD 08 MJIC X 08 MJIC	2
14	HYDI00683	6600-08-08 TEE, MJIC, MJIC, FJIC	2
15	HYDI00687	6801-08-12 ELBOW 90°, MALE ORB	4
16	HYDI00822	CYL 3.5 X 20	2
17	HYDI00825	-08 ORB BALL VALVE	2
18	HYD500009	CYL 5 X 24	2
19	PCT500283	HEIGHT LINK PLATE	2
20	SAF200112	HYDRAULIC LOCKOUT DECAL	2
21	SAW500036	BLADE FRAME PIN	4
22	SAW500095	HEIGHT CYL PIN	2
23	WLD500003	YOKE MOUNT WELDT	1
24	WLD500034	LEVEL ADJ WELDT	1

HYDI00822 SEAL KIT: HYDI00716

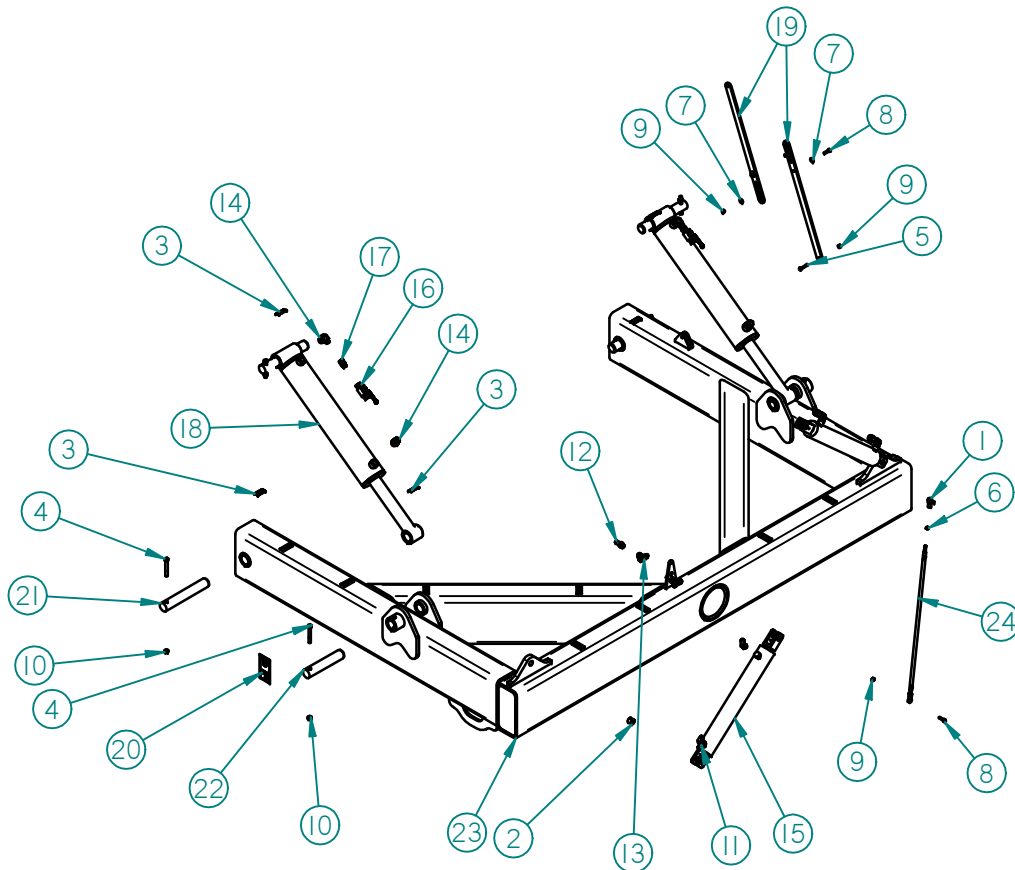
HYD500009 SEAL KIT: HYD500016

2.180

YOKE ASSY

ASM500004

SERIAL # GB218018104167 TO GB218019104174



ITEM	PART NO.	DESCRIPTION	QTY
1	CMP100253	3/8 SEALMASTER ROD END TF-6	2
2	CMP100273	16 DU 16 PTFE BRONZE/STEEL	2
3	CMP500066	DECAL GREASE	5
4	FST100103	1/2" X 4" CAP SCREW	6
5	FST100143	3/8" X 2" CAP SCREW	1
6	FST100148	3/8" NUT	2
7	FST100150	3/8" FLAT WASHER	4
8	FST100201	3/8" X 1 1/2" CAP SCREW	4
9	FST100206	3/8" LOCKNUT	4
10	FST100356	1/2" CRIMP NUT	6
11	HYD100337	6801-08-08 ELBOW 90°, MALE ORB	4
12	HYD100392	BULKHEAD 08 MJIC X 08 MJIC	2
13	HYD100683	6600-08-08 TEE, MJIC, MJIC, FJIC	2
14	HYD100810	6801-12-08 ELBOW 90°, MALE ORB	4
15	HYD100812	CYL 3 X 20	2
16	HYD100825	-08 ORB BALL VALVE	2
17	HYD100828	6402-08-08 MALE ORB TO FEMALE	2
18	HYD500009	CYL 5 X 24	2
19	PCT500283	HEIGHT LINK PLATE	2
20	SAF200112	HYDRAULIC LOCKOUT DECAL	2
21	SAW500036	BLADE FRAME PIN	4
22	SAW500095	HEIGHT CYL PIN	2
23	WLD500003	YOKE MOUNT WELDT	1
24	WLD500034	LEVEL ADJ WELDT	1

HYD500009 SEAL KIT: HYD500016

HYD100812 SEAL KIT: HYD100813

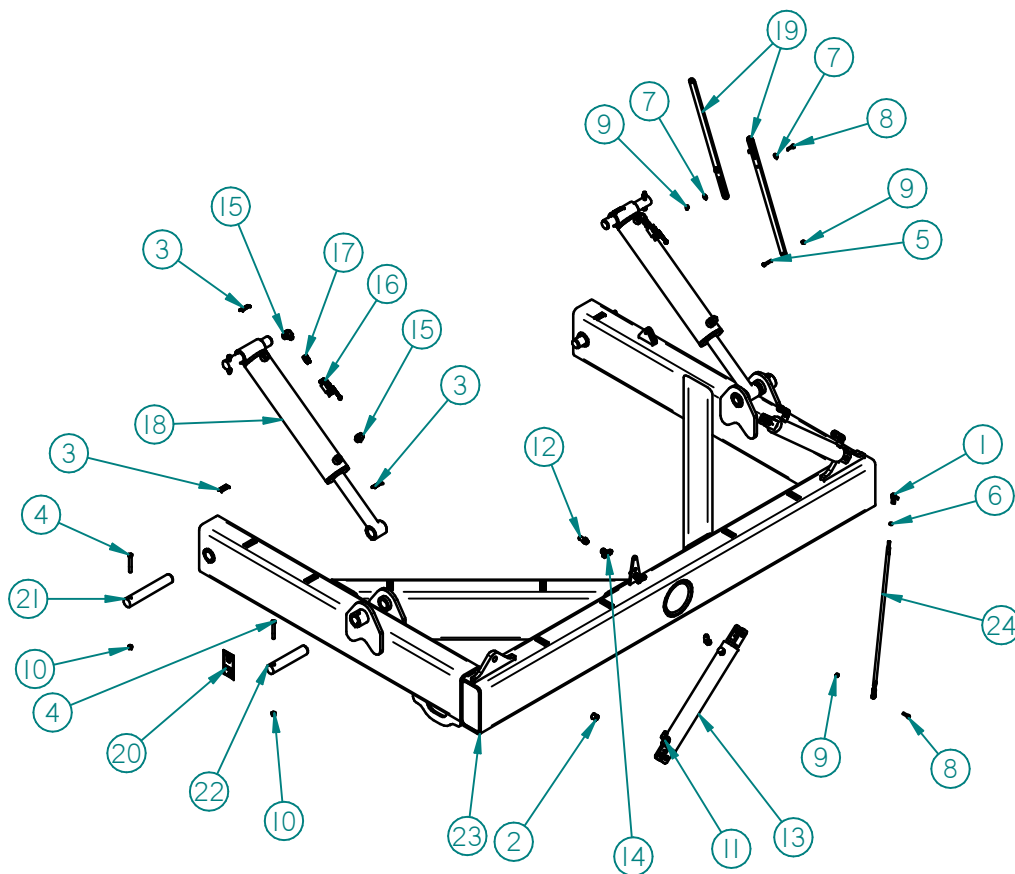
HYD100812 HAS NITRIDED (BLACK) SHAFT,
HYD100533 HAS CHROME (SILVER) SHAFT

2.180

YOKE ASSY

ASM500004

SERIAL # GB18017000150 TO GB218018104166 AND GB218019104175 TO GB218020104177



ITEM	PART NO.	DESCRIPTION	QTY
1	CMP100253	3/8 SEALMASTER ROD END TF-6	2
2	CMP100273	16 DU 16 PTFE BRONZE/STEEL	2
3	CMP500066	DECAL GREASE	5
4	FST100103	1/2" x 4" CAP SCREW	6
5	FST100143	3/8" X 2" CAP SCREW	1
6	FST100148	3/8" NUT	2
7	FST100150	3/8" FLAT WASHER	4
8	FST100201	3/8" X 1 1/2" CAP SCREW	4
9	FST100206	3/8" LOCKNUT	4
10	FST100356	1/2" CRIMP NUT	6
11	HYDI00337	6801-08-08 ELBOW 90°, MALE ORB	4
12	HYDI00392	BULKHEAD 08 MJIC X 08 MJIC	2
13	HYDI00533	CYL 3 X 20 WELDED	2
14	HYDI00683	6600-08-08 TEE, MJIC, MJIC, FJIC	2
15	HYDI00810	6801-12-08 ELBOW 90°, MALE ORB	4
16	HYDI00825	-08 ORB BALL VALVE	2
17	HYDI00828	6402-08-08 MALE ORB TO FEMALE	2
18	HYD500009	CYL 5 X 24	2
19	PCT500283	HEIGHT LINK PLATE	2
20	SAF200112	HYDRAULIC LOCKOUT DECAL	2
21	SAW500036	BLADE FRAME PIN	4
22	SAW500095	HEIGHT CYL PIN	2
23	WLD500003	YOKE MOUNT WELDT	1
24	WLD500034	LEVEL ADJ WELDT	1

HYDI00533 SEAL KIT: HYDI00776

HYD500009 SEAL KIT: HYD500016

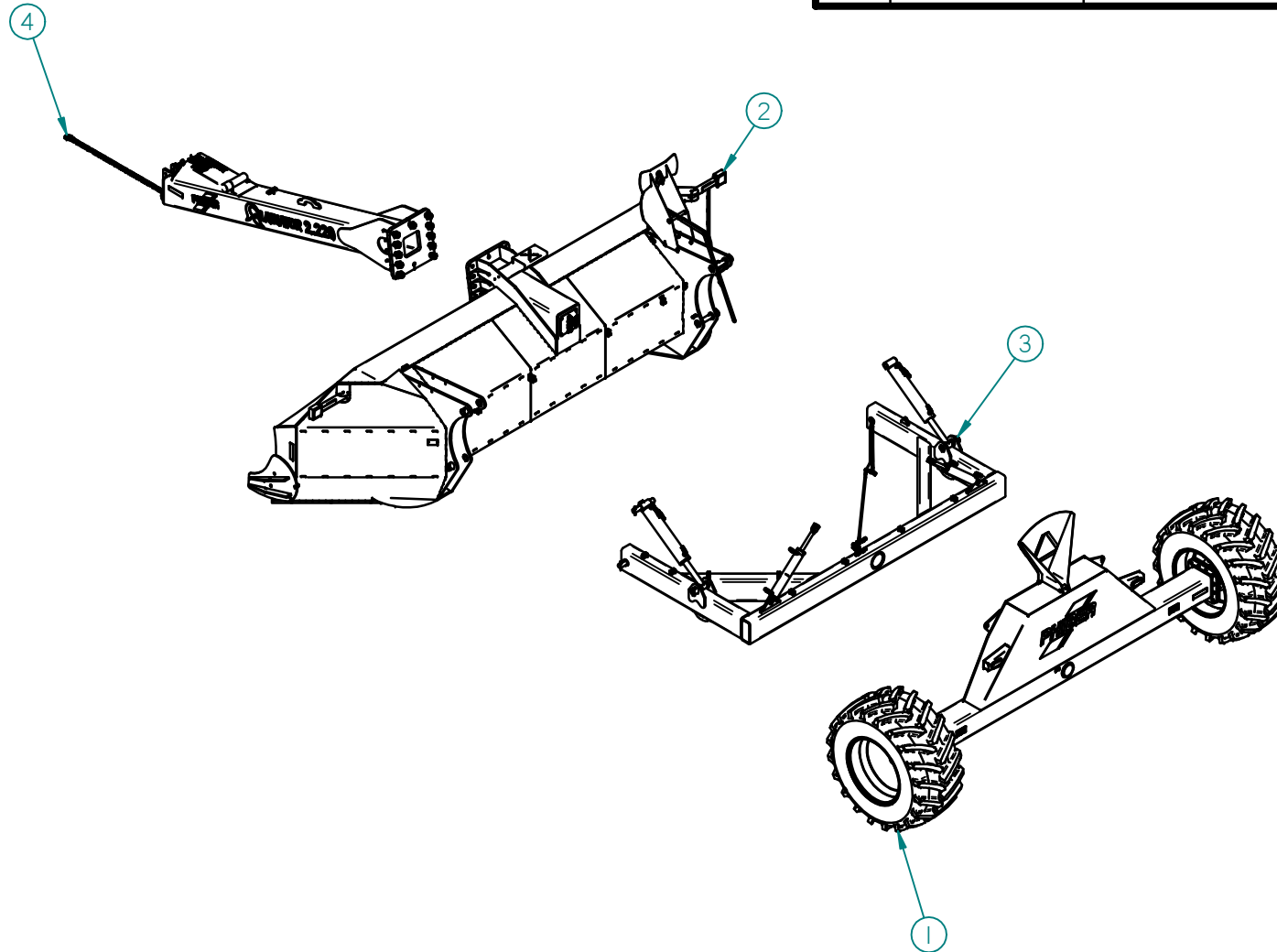
HYDI00812 HAS NITRIDED (BLACK) SHAFT,
HYDI00533 HAS CHROME (SILVER) SHAFT

2.220

GLADIATOR 2.220 MODEL (22')

WHG500001

ITEM	PART NO.	DESCRIPTION	QTY
1	ASM500008	AXLE ASSY	1
2	ASM500009	BLADE ASSY	1
3	ASM500010	YOKE MOUNT ASSY	1
4	ASM500011	HITCH ASSY	1

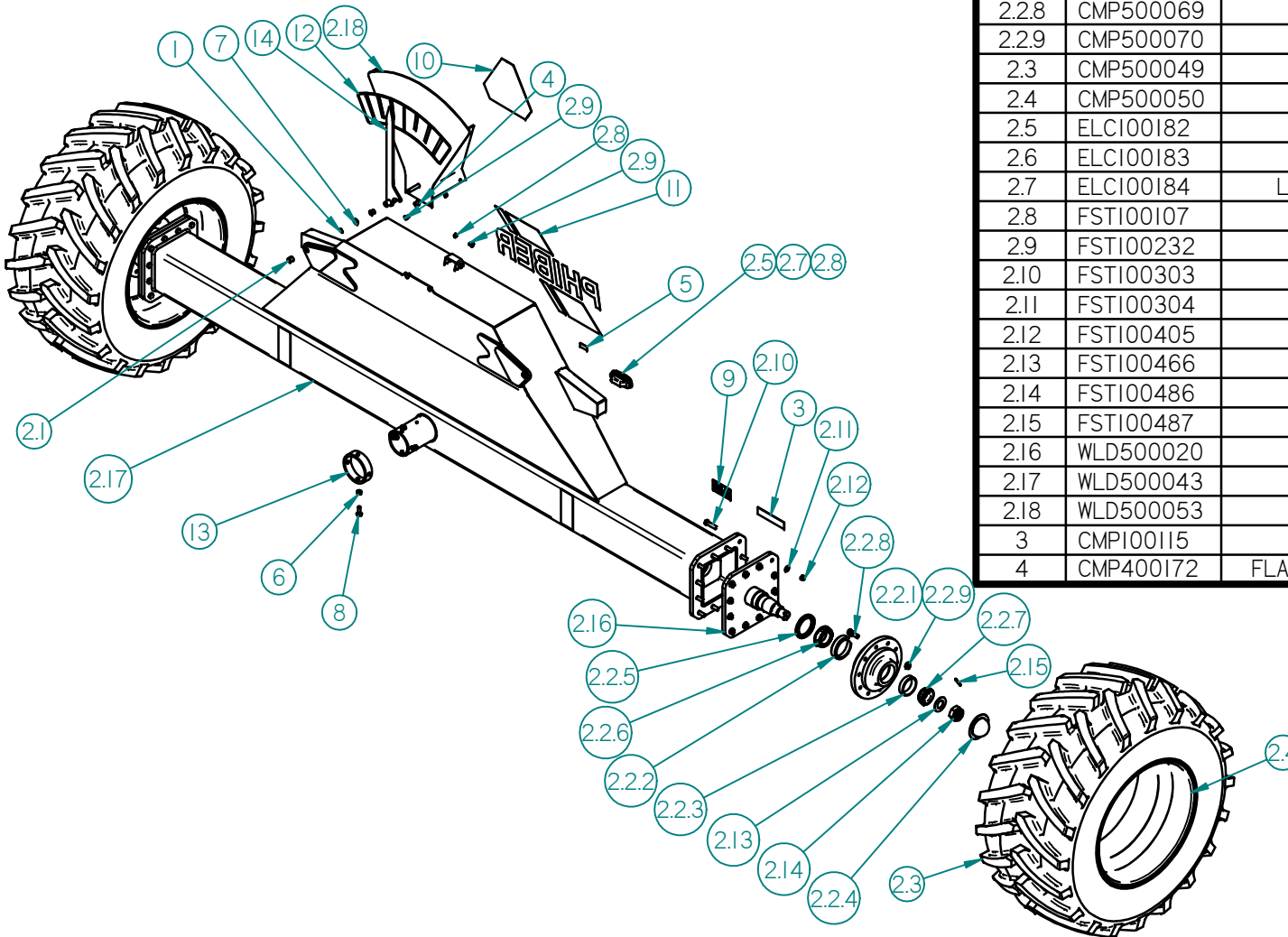


2.220

AXLE ASSY

ASM500008

ITEM	PART NO.	DESCRIPTION	QTY	ITEM	PART NO.	DESCRIPTION	QTY
5	CMP500066	DECAL GREASE	1	1	300338	SNAP RING EXTERNAL 0.75	1
6	FST100278	5/8" CRIMP NUT	4	2.1	CMP100273	16 DU 16 PTFE BRONZE/STEEL	2
7	FST100404	3/4" WASHER HARDENED	1	2.2	CMP500029	HUB, 10 BOLT, 13.188" BC, 11.040" PILOT	2
8	FST100442	5/8" X 2" FLANGE BOLT GR8	4	2.2.1	CMP500022	10 BOLT HOUSING, HD1021	1
9	SAF200103	PINCH POINT HAZARD UNDER LIFT IN	2	2.2.2	CMP500027	RACE, HDA1021 HUB, INNER HM218210	1
10	SAF200107	SLOW MOVING VEHICLE SIGN	1	2.2.3	CMP500028	RACE, HDA1021 HUB, OUTER HM 212010	1
11	SAF500008	PHIBER LOGO 20.00" X 36.23"	1	2.2.4	CMP500030	DUST CAP	1
12	SAF500013	LEVEL IND DECAL	1	2.2.5	CMP500031	CR43771 SEAL	1
13	SAW500033	ROTATION LOCK TUBE	1	2.2.6	CMP500067	BEARING, HDA1021 HUB, INNER HM218248	1
14	WLD500033	LEVEL IND WELDT	1	2.2.7	CMP500068	BEARING, HDA1021 HUB, OUTER HM 212049	1
				2.2.8	CMP500069	WHEEL STUD, WB51	10
				2.2.9	CMP500070	WHEEL NUT, WB52	10
				2.3	CMP500049	30.5-32 TIRE 16 PLY	2
				2.4	CMP500050	27X32 10 HOLE RIM	2
				2.5	ELC100182	LIGHT, OVAL RED GRO 52892	2
				2.6	ELC100183	LIGHT, OVAL GROMMET 92420	2
				2.7	ELC100184	LIGHT, OVAL 3 PIN PIGTAIL 67000	2
				2.8	FST100107	1/2" NUT	4
				2.9	FST100232	1/2" X 1" CARRIAGE BOLT	4
				2.10	FST100303	3/4" X 3" CAP SCREW	24
				2.11	FST100304	3/4" FLAT WASHER	24
				2.12	FST100405	3/4" CRIMP NUT	24
				2.13	FST100466	2" SAE FLAT WASHER	2
				2.14	FST100486	2-12 UN SLOTTED NUT	2
				2.15	FST100487	3/8" X 3" ROLL PIN	2
				2.16	WLD500020	SPINDLE WELDT	2
				2.17	WLD500043	AXLE WELDT	1
				2.18	WLD500053	AXLE IND WELDT	1
				3	CMP100115	CONSPICUITY TAPE RED 2" X 9"	2
				4	CMP400172	FLANGE BUSHING .750" X .875" X 1.000"	2



WHEEL BOLT TORQUE: 462 FTLB

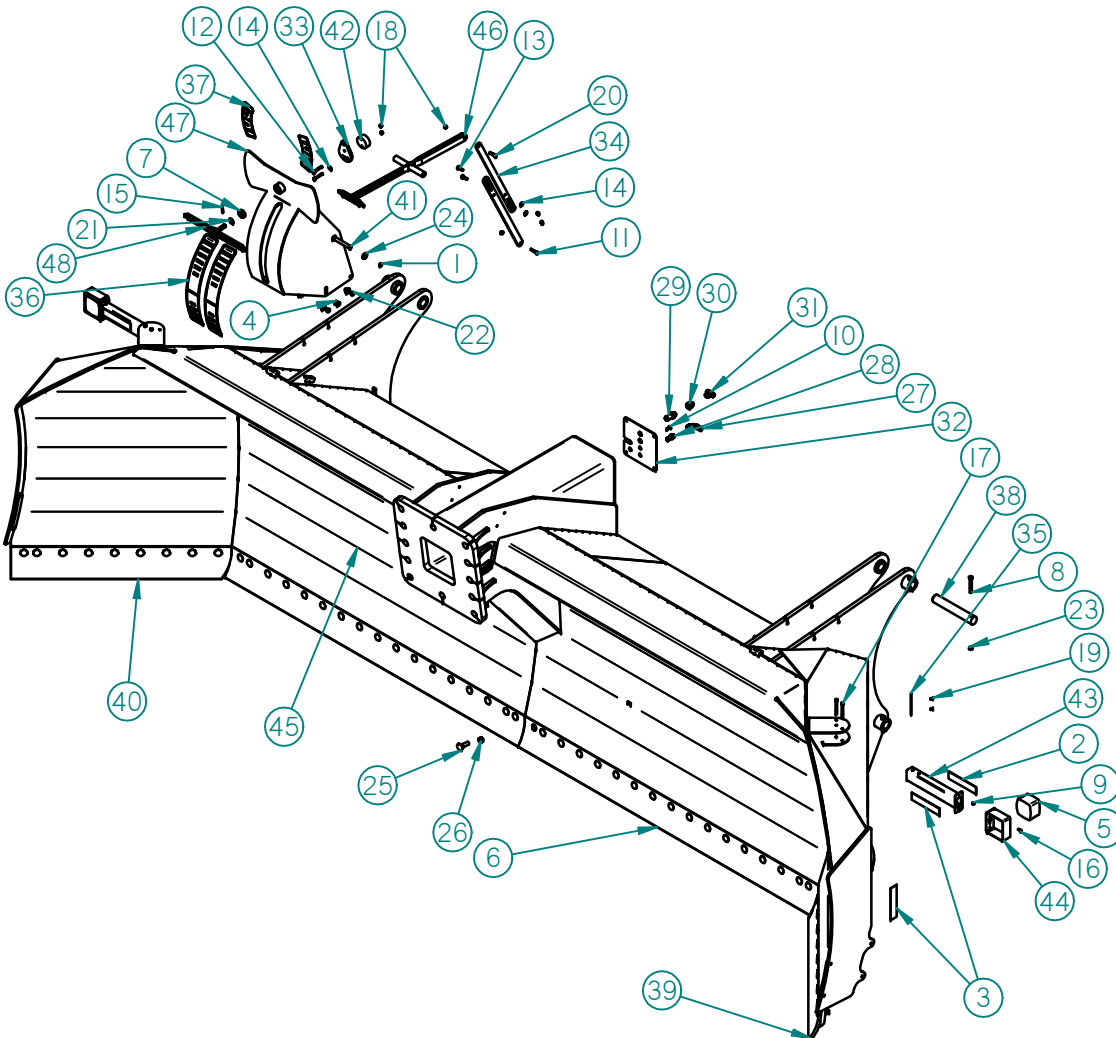
2.220

BLADE ASSY

ASM500009

ITEM	PART NO.	DESCRIPTION	QTY
41	SAW500064	HEIGHT LINKAGE PIVOT SHAFT	1
42	SAW500067	WEIGHT SHAFT	1
43	WLD500022	LIGHT POST WELDT	2
44	WLD500032	LIGHT COVER WELDT	2
45	WLD500041	22' BLADE WELDMENT	1
46	WLD500056	HEIGHT IND WELDT	1
47	WLD500057	HORIZON IND WELDT	1
48	WLD500060	HORIZON IND WELDT	1

ITEM	PART NO.	DESCRIPTION	QTY
1	300338	SNAP RING EXTERNAL 0.75	2
2	CMPI00115	CONSPICUITY TAPE RED 2" X 9"	4
3	CMPI00128	CONSPICUITY TAPE AMBER 2" X 9"	6
4	CMP400172	FLANGE BUSHING .750" X .875" X	4
5	CMP500047	CLEARANCE MARKER AMBER/AMBER	2
6	CMP500060	5/8" X 8" GRADER BLADE	2
7	CMP500065	0.688" HEX BORE BALL BEARING	2
8	FSTI00103	1/2" x 4" CAP SCREW	6
9	FSTI00135	1/4" LOCK NUT	4
10	FSTI00141	3/8" X 1" CAP SCREW	4
11	FSTI00143	3/8" X 2" CAP SCREW	1
12	FSTI00144	3/8" X 2 1/2" CAP SCREW	2
13	FSTI00147	3/8" x 1 1/2" CARRIAGE BOLT	2
14	FSTI00150	3/8" FLAT WASHER	3
15	FSTI00155	1/4" X 1 1/2" ROLL PIN	1
16	FSTI00169	1/4" x 3/4" CAP SCREW	4
17	FSTI00200	3/8" X 4" CAP SCREW	4
18	FSTI00206	3/8" LOCKNUT	12
19	FSTI00228	POP RIVET STEEL 3/16 X 1/2 X 5/8	4
20	FSTI00281	3/8" X 1 3/4" BOLT	1
21	FSTI00304	3/4" FLAT WASHER	2
22	FSTI00317	1/2" X 2 1/4" BOLT	4
23	FSTI00356	1/2" CRIMP NUT	6
24	FSTI00404	3/4" WASHER HARDENED	3
25	FSTI00483	3/4 X 2 3/4 PLOW BOLT GR8	52
26	FSTI00488	3/4" NUT GR8	52
27	HYDI00309	JIC HOSE END 8G 8F JX90M	1
28	HYDI00392	BULKHEAD 08 MJIC X 08 MJIC	4
29	HYDI00393	BULKHEAD 12 MJIC X 12 MJIC	2
30	HYDI00550	2406-12-08 JIC REDUCER	2
31	HYDI00683	6600-08-08 TEE, MJIC, MJIC, FJIC	4
32	PCT500048	TUBE CLOSING PLATE	1
33	PCT500280	WEIGHT PLATE	1
34	PCT500283	HEIGHT LINK PLATE	2
35	SAFI00100	SERIAL NUMBER PLATE	1
36	SAF500012	HEIGHT IND DECAL	2
37	SAF500014	HORIZON IND DECAL	2
38	SAW500036	BLADE FRAME PIN	4
39	SAW500042	LH WING BLADE	1
40	SAW500061	RH WING BLADE	1

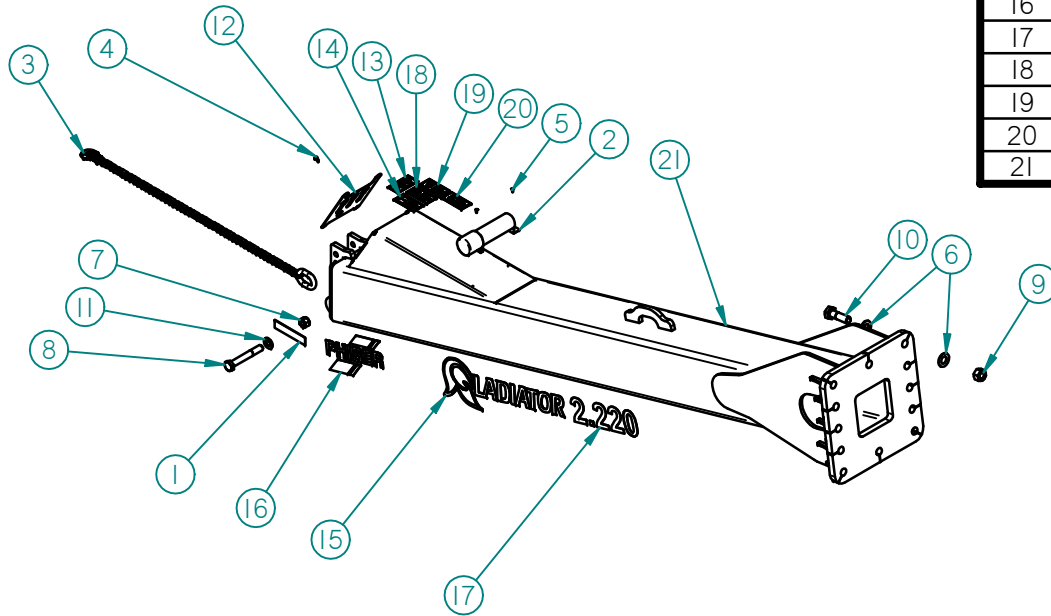


2.220

HITCH ASSY

ASM500011

ITEM	PART NO.	DESCRIPTION	QTY
1	CMPI00128	CONSPICUITY TAPE AMBER 2" X 9"	6
2	CMPI00313	MANUAL CANISTER	1
3	CMP500073	SAFETY CHAIN, 1/2"x 5' LG.	1
4	FST100140	3/8" X 3/4" CAP SCREW	4
5	FST100228	POP RIVET STEEL 3/16 X 1/2 X 5/8	2
6	FST100313	1 1/2" HARDENED WASHER	23
7	FST100321	1 1/4" LOCK NUT	1
8	FST100351	1 1/4" X 9" GR 8 BOLT	1
9	FST100478	1 1/2-12 NF LOCK NUT	12
10	FST100479	1 1/2" X 5" NF CAP SCREW GR8	12
11	FST100726	1 1/4" HARDENED WASHER F436	1
12	PCT500046	HYD STORAGE PLATE	1
13	SAF200103	PINCH POINT HAZARD UNDER LIFT IN	1
14	SAF200104	READ SAFETY MANUAL	1
15	SAF500002	GLADIATOR DECAL	2
16	SAF500007	PHIBER LOGO 10.00" X 17.88"	1
17	SAF500010	22' GLADIATOR MODEL DECAL	2
18	SAF500015	SPEED LIMIT DECAL	1
19	SAF500016	HYDRAULIC SAFETY DECAL	1
20	SAF500017	DIG SAFETY DECAL	1
21	WLD500044	22' GLADIATOR HITCH WELDT	1



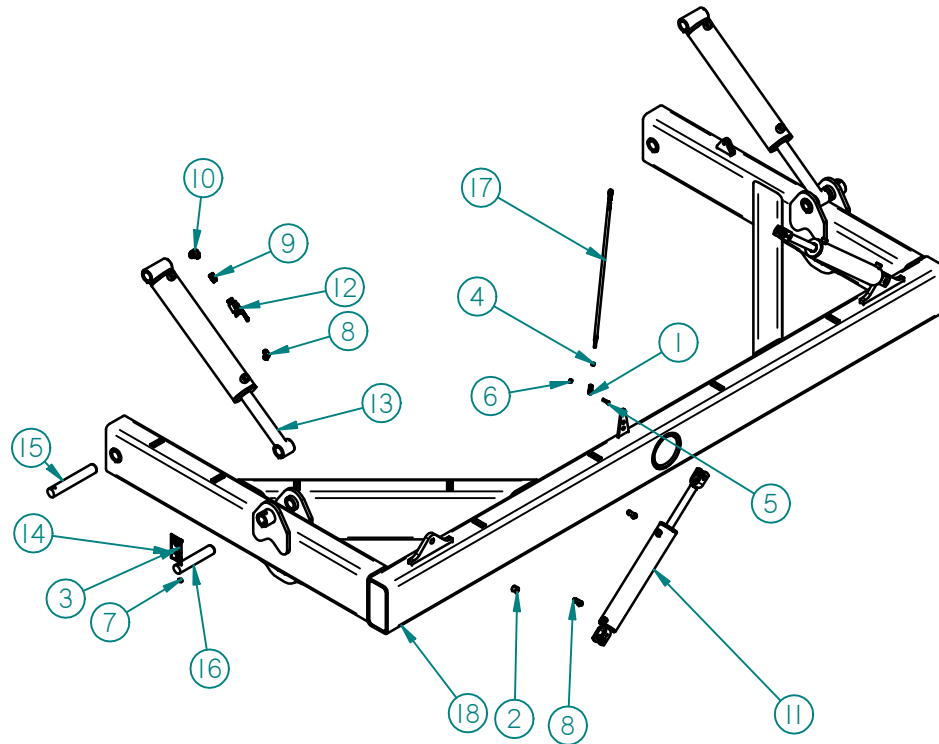
2.220

YOKE ASSY

ASM500010

SERIAL # GB218020104178 AND OVER

ITEM	PART NO.	DESCRIPTION	QTY
1	CMPI00253	3/8 SEALMASTER ROD END TF-6	2
2	CMPI00273	16 DU 16 PTFE BRONZE/STEEL	2
3	FSTI00103	1/2" x 4" CAP SCREW	2
4	FSTI00148	3/8" NUT	2
5	FSTI00201	3/8" X 1 1/2" CAP SCREW	1
6	FSTI00206	3/8" LOCKNUT	1
7	FSTI00356	1/2" CRIMP NUT	2
8	HYDI00337	6801-08-08 ELBOW 90°, MALE ORB	3
9	HYDI00365	6402-08-08 SWIVEL ADAPTER, MALE	1
10	HYDI00687	6801-08-12 ELBOW 90°, MALE ORB	1
11	HYDI00822	CYL 3.5 X 20	2
12	HYDI00825	-08 ORB BALL VALVE	1
13	HYD500009	CYL 5 X 24	2
14	SAF200112	HYDRAULIC LOCKOUT DECAL	2
15	SAW500036	BLADE FRAME PIN	1
16	SAW500095	HEIGHT CYL PIN	2
17	WLD500034	LEVEL ADJ WELDT	1
18	WLD500042	YOKE MOUNT WELDT	1



HYDI00822 SEAL KIT: HYDI00716

HYD500009 SEAL KIT: HYD500016

2.220

YOKE ASSY

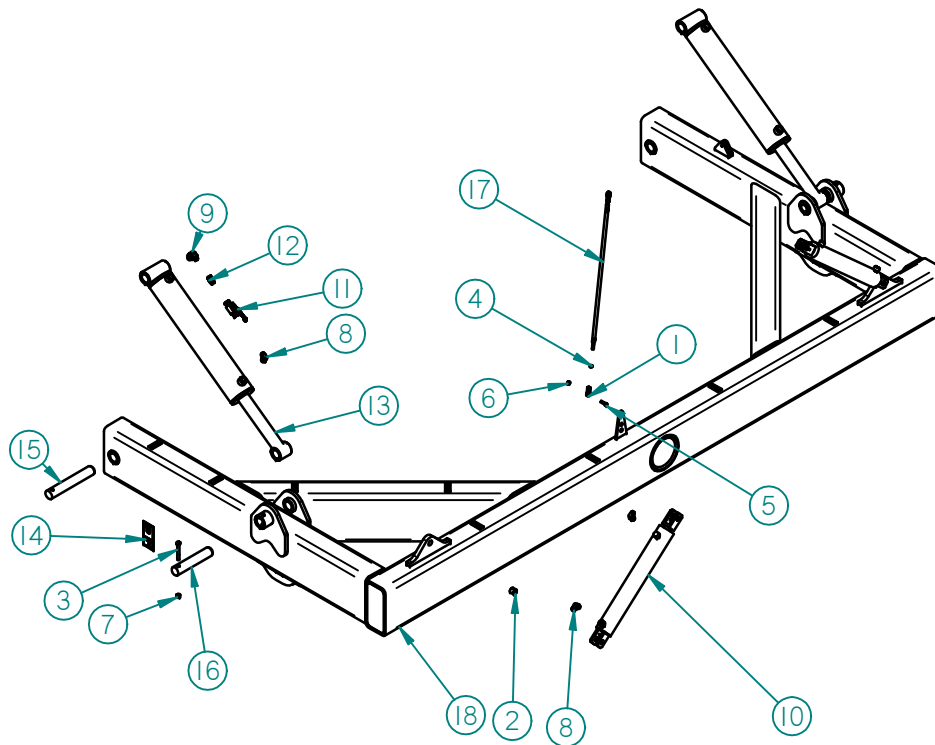
ASM500010

SERIAL # GB218018104167 TO GB218019104174

ITEM	PART NO.	DESCRIPTION	QTY
1	CMP100253	3/8 SEALMASTER ROD END TF-6	2
2	CMP100273	16 DU 16 PTFE BRONZE/STEEL	2
3	FST100103	1/2" x 4" CAP SCREW	2
4	FST100148	3/8" NUT	2
5	FST100201	3/8" X 1 1/2" CAP SCREW	1
6	FST100206	3/8" LOCKNUT	1
7	FST100356	1/2" CRIMP NUT	2
8	HYD100337	6801-08-08 ELBOW 90°, MALE ORB	3
9	HYD100810	6801-12-08 ELBOW 90°, MALE ORB	1
10	HYD100812	CYL 3 X 20	2
11	HYD100825	-08 ORB BALL VALVE	1
12	HYD100828	6402-08-08 MALE ORB TO FEMALE	1
13	HYD500009	CYL 5 X 24	2
14	SAF200112	HYDRAULIC LOCKOUT DECAL	2
15	SAW500036	BLADE FRAME PIN	1
16	SAW500095	HEIGHT CYL PIN	2
17	WLD500034	LEVEL ADJ WELDT	1
18	WLD500042	YOKE MOUNT WELDT	1

HYD500009 SEAL KIT: HYD500016

HYD100812 SEAL KIT: HYD100813

HYD100812 HAS NITRIDED (BLACK) SHAFT,
HYD100533 HAS CHROME (SILVER) SHAFT

2.220

YOKE ASSY

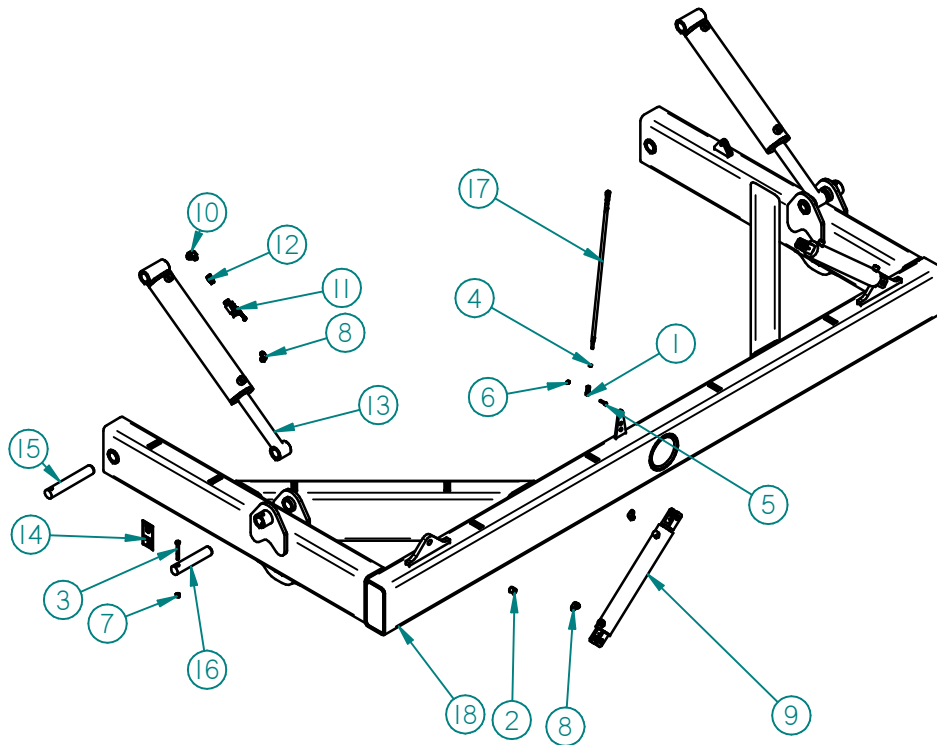
ASM500010

SERIAL # GB18017000150 TO GB218018104166 AND GB218019104175 TO GB218020104177

ITEM	PART NO.	DESCRIPTION	QTY
1	CMPI00253	3/8 SEALMASTER ROD END TF-6	2
2	CMPI00273	16 DU 16 PTFE BRONZE/STEEL	2
3	FST100103	1/2" x 4" CAP SCREW	2
4	FST100148	3/8" NUT	2
5	FST100201	3/8" X 1 1/2" CAP SCREW	1
6	FST100206	3/8" LOCKNUT	1
7	FST100356	1/2" CRIMP NUT	2
8	HYDI00337	6801-08-08 ELBOW 90°, MALE ORB	3
9	HYDI00533	CYL 3 X 20 WELDED	2
10	HYDI00810	6801-12-08 ELBOW 90°, MALE ORB	1
11	HYDI00825	-08 ORB BALL VALVE	1
12	HYDI00828	6402-08-08 MALE ORB TO FEMALE	1
13	HYD500009	CYL 5 X 24	2
14	SAF200112	HYDRAULIC LOCKOUT DECAL	2
15	SAW500036	BLADE FRAME PIN	1
16	SAW500095	HEIGHT CYL PIN	2
17	WLD500034	LEVEL ADJ WELDT	1
18	WLD500042	YOKE MOUNT WELDT	1

HYDI00533 SEAL KIT: HYDI00776

HYD500009 SEAL KIT: HYD500016

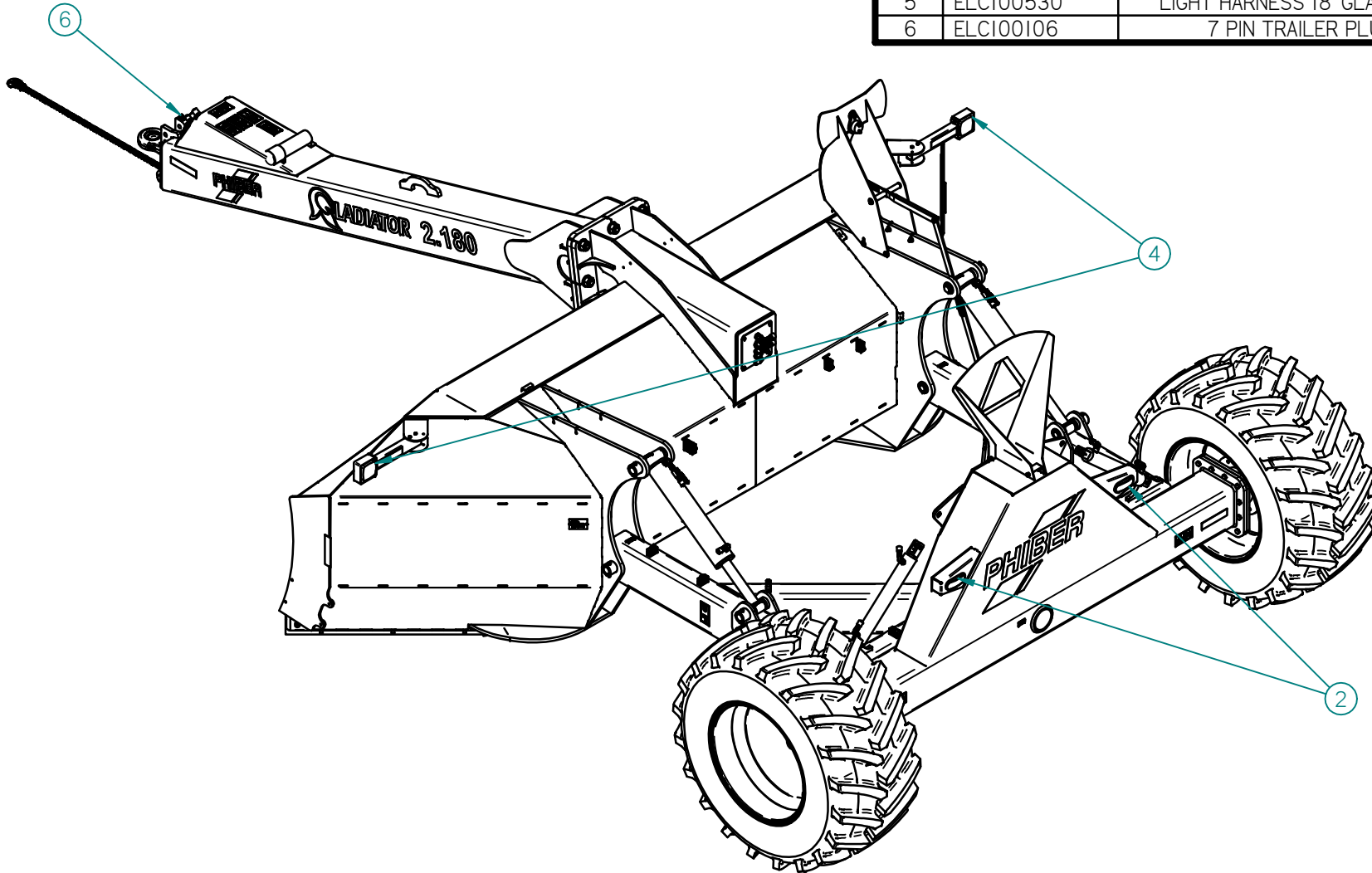
HYDI00812 HAS NITRIDED (BLACK) SHAFT,
HYDI00533 HAS CHROME (SILVER) SHAFT

2.180 / 2.220

LIGHT HARNESS 18' GLADIATOR

ELCI00530

ITEM	PART NO.	DESCRIPTION	QTY
2	ELCI00182	LIGHT, OVAL RED GRO 52892	2
4	CMP500047	CLEARANCE MARKER AMBER/AMBER	2
5	ELCI00530	LIGHT HARNESS 18' GLADIATOR	1
6	ELCI00106	7 PIN TRAILER PLUG	1

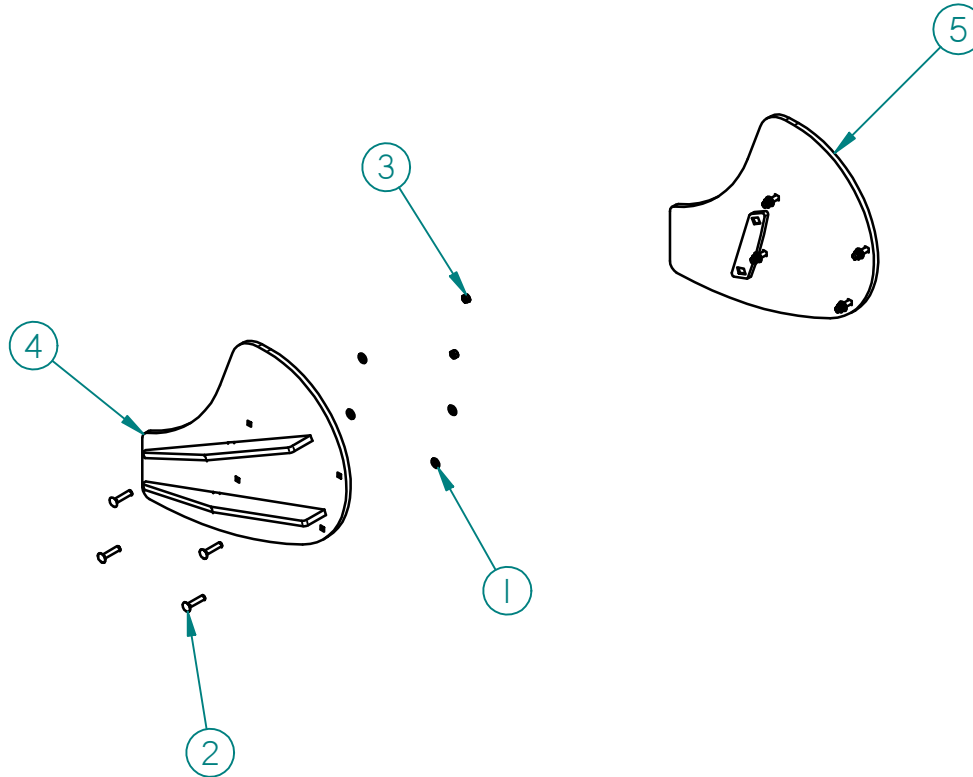


2.180 / 2.220

BLADE EXTENSION

KIT500007

ITEM	PART NO.	DESCRIPTION	QTY
1	FST100151	1/2" FLAT WASHER HARDENED	8
2	FST100346	1/2" X 2 1/2" CARRIAGE BOLT	8
3	FST100356	1/2" CRIMP NUT	8
4	WLD500055	BLADE EXTENSION LH	1
5	WLD500058	BLADE EXTENSION RH	1

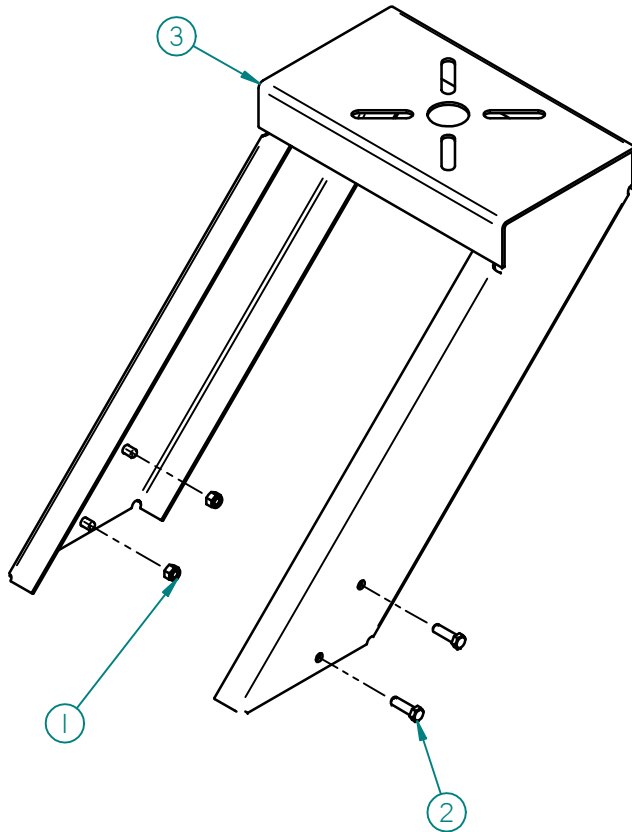


2.180 / 2.220

GPS MOUNT KIT

KIT500006

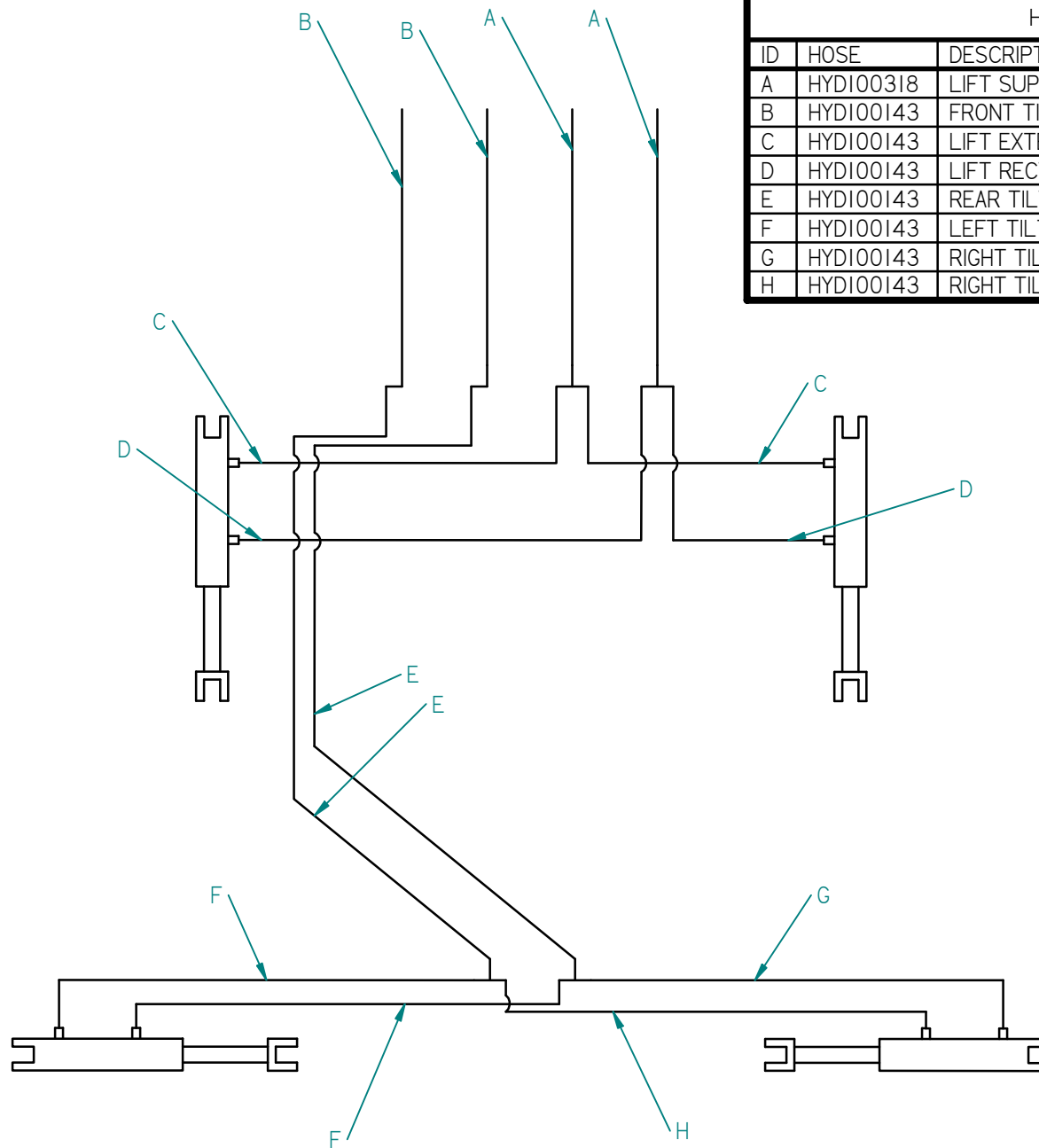
ITEM	PART NO.	DESCRIPTION	QTY
1	FST100206	3/8" LOCKNUT	4
2	FST100241	3/8" X 1 1/4" CAP SCREW	4
3	WLD500054	GPS MOUNT WELDT	1



2.180 / 2.220

GLADIATOR

WHG500002, WHG500001



HYDRAULIC HOSE SCHEMATIC					
ID	HOSE	DESCRIPTION	END 1	END 2	QTY
A	HYDI00318	LIFT SUPPLY HOSE	HYDI00312	HYDI00312	2
B	HYDI00143	FRONT TILT SUPPLY HOSE	HYDI00307	HYDI00307	2
C	HYDI00143	LIFT EXTEND HOSE	HYDI00307	HYDI00320	2
D	HYDI00143	LIFT RETRACT HOSE	HYDI00307	HYDI00307	2
E	HYDI00143	REAR TILT SUPPLY HOSE	HYDI00309	HYDI00307	2
F	HYDI00143	LEFT TILT HOSE	HYDI00307	HYDI00307	2
G	HYDI00143	RIGHT TILT EXTEND HOSE	HYDI00307	HYDI00307	1
H	HYDI00143	RIGHT TILT RETRACT HOSE	HYDI00307	HYDI00307	1

This page is intentionally left blank



PhiBer Manufacturing Inc.
Box 58 Crystal City, MB
Canada R0K 0N0